

Haro
Bikes



2000

For over twenty years Haro has pushed the envelope in developing high performance cycling products. As one of the original "rider owned" companies, Haro has grown significantly without compromising the vision, creativity, and attention to detail of it's founder, Bob Haro. With the introduction of the year 2000 product line, you can see that that same passion and commitment to the sport are continuing into the new millennium.

Although our product line is bigger than ever, our focus remains small. You won't find electric bikes, road bikes, recumbants or fitness equipment in our line. What you will find are the best freestyle, BMX, dirt jumping and mountain bikes we can produce. Nothing more. Nothing less. Bikes that have all evolved from some very deep roots in the sport of BMX.



FREESTYLE



BMX



DIRT



TRACK & TRAIL



ATB

2000



Regardless of price, every product we produce has been designed and developed from a rider's perspective. And that includes some brutally honest input from our pros. If some things not right, they let us know. Then we fix it. It's a process we take seriously. And one that is proven year in and year out by the success of our

world class athletes, and the quality of the Haro products they endorse.

We're proud of our part in writing BMX and freestyle history, but we're definitely not finished. The products featured in this catalog demonstrate what we've learned from experience and competition as well as our commitment to the future.

©1999-2000 Haro Bicycle Corp. Specifications subject to change without notice. CPSC equipment included but not shown. 1999 Haro bikes are covered by a limited warranty. See your authorized Haro dealer for details. WARNING: Much of the action depicted in this manual is potentially dangerous. Virtually all of the riders seen in our photographs are experienced professionals. Do not attempt to duplicate any stunts that are beyond your own capabilities. Always wear the appropriate safety gear. For your nearest authorized Haro dealer, call 760-599-0544 or visit us online at www.harobikes.com. Product photography: Pete Demos. Action photography: Adam Booth, Simon Cudby, Pete Demos, Gork, Kurt Heine, Scott Papiro. Catalog Design: Pete Demos

WERKS SERIES

In conjunction with a renewed focus on World Cup and NORBA racing Haro will soon introduce a new line of high end bikes. The new bikes, designated as the Werks Series, will be designed with serious off-road riding and racing as their sole purpose.

Developed with feedback and input from pro riders Mike King, Seamus McGrath and Paul Rowney, the Werks Series will include two rigid frame cross country bikes, two dual slalom bikes and and two full suspension frames, one for downhill and one for cross country use. What will distinguish the Werks Series is the attention to detail and a lack of compromise when it comes to component selection.

A separate Werks catalog will be released in the fall of 1999.



Haro invented freestyle BMX and Dave Mirra and Ryan Nyquist have continued a tradition of winning, in a big way. By dominating vert and street competitions including the X Games for the past two years, Haro's continuing leadership position in freestyle is unquestioned. Add to that flatland specialist Chad DeGroot and a supporting cast of world class team riders from countries all over the world and you begin to understand how serious we are. We've always made the best freestyle bikes, now check out the best freestyle bikes we've ever made.



MIRRA PRO



Frame colors: Pearl White & Candy Red



Just like Dave's bike. It's not made of gold, but it's won more gold medals than any other bike. You can't buy a better bike than this.

- Proven frame design with more X-Games gold medals than anyone
- New burlier frame with chainstay monostay
- 10mm thick made in USA MegaNuke ring
- Haro Heffer 3 rims with Haro MegaHubs
- Dia-Compe Tank headset
- Mirra Pro bars and seat



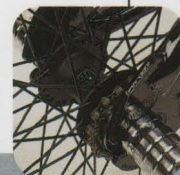


Frame colors: Gloss Black & Electric Green

BLAMMO

For a lot less than a Mirra Pro, you can get a bike that's won three X Games gold medals. There's obviously no limit to what you can do on this bike.

- Same frame as the Mirra Pro, but more affordable
- Haro Heffer 3 rims with Haro MegaHubs
- Fusion 3-piece cromoly crank w/pinch bolt
- Dia-Compe 996 brakes front and rear
- Haro Nuke Ring
- Haro Kneesaver II handlebar



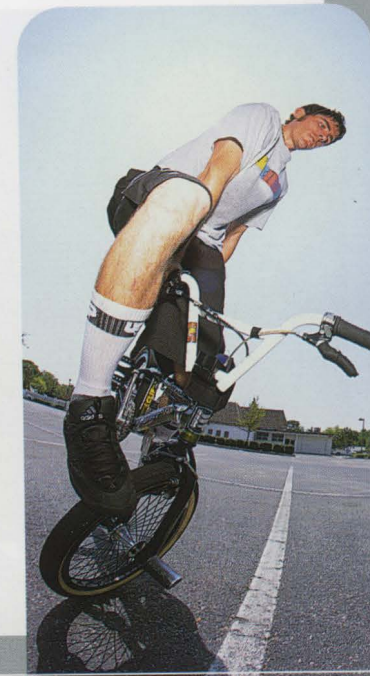
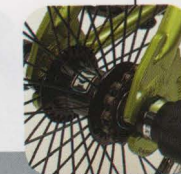
MASTER



Frame colors: Loogie & Pearl White

The Master. An original. The first bike to define "state of the art" in freestyle bikes. Still the ultimate flatland ride.

- Geometry refreshed by Chad Degroot
- Haro freecoaster with Haro Heffer 3 rims
 - 37t Haro Nuke ring made in USA
- Fusion 3-piece cromoly 160mm crankset
 - Haro Big Block pedals
- Ground Round alloy axle extenders





Frame colors: Gloss Black & Ano Blue

MIRRA FLAIR

New for the year 2000. A solid performer created from the gene pool that dominates freestyle competition.

- Same frame as the Mirra Pro, but even more affordable
- Haro Heffer chrome plated rims
- Haro FatHubs w/1/2" cromoly axles
- New forged cromoly Haro 3-piece crankset
- Haro Multisurface 3 tires with 100 psi rating
- Dia-Compe 996 brakes front and rear
- SST Dryg rotor



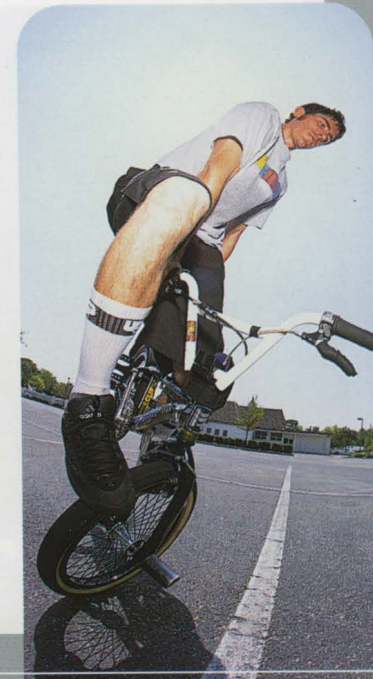
MASTER



Frame colors: Loogie & Pearl White

The Master. An original. The first bike to define "state of the art" in freestyle bikes. Still the ultimate flatland ride.

- Geometry refreshed by Chad Degroot
- Haro freecoaster with Haro Heffer 3 rims
 - 371 Haro Nuke ring made in USA
- Fusion 3-piece cromoly 160mm crankset
 - Haro Big Block pedals
- Ground Round alloy axle extenders





Frame colors: Gloss Black & Ano Blue

MIRRA FLAIR

New for the year 2000. A solid performer created from the gene pool that dominates freestyle competition.

- Same frame as the Mirra Pro, but even more affordable
- Haro Heffer chrome plated rims
- Haro FatHubs w/1/2" cromoly axles
- New forged cromoly Haro 3-piece crankset
- Haro Multisurface 3 tires with 100 psi rating
- Dia-Compe 996 brakes front and rear
- SST Oryg rotor



Frame colors: Chrome, Sky Blue & Cromolive

SHREDDER

Our most versatile and capable performer. Freestyle, dirt, street, whatever... The name says it all.

- Super versatile frame at home in the dirt/street/vert/flat
- New full cromoly frame with strengthened top tube seat stay junction
- Haro Heffer 2 rims with Haro FatHubs w/1/2" cromoly axles
- Haro Slantnose padded saddle w/8mm rails
- Haro Nuke 44t Nuke Ring
- Fusion MegaTube axle extenders w/anti-turn pins



REVO MAG

We've always said entry level doesn't have to be boring. The redesigned Revo is all the proof you'll need.

- Same spec as Revo but with OGK 3-Spoke mag wheels
- Sledgehammer handlebar
- SST Oryg Rotor

Frame colors: Chrome, Yellow & Ano Blue



REVO

We've always said entry level doesn't have to be boring. The redesigned Revo is all the proof you'll need.

- Shorty version of the new Shredder frame
 - Tektro U-Brakes front and rear
- Dia-Compe oversize threadless headset
 - Haro RC3 rims with 1/2" axle hubs
 - Fusion MegaTube axle extenders
 - Haro 2-piece padded saddle



Frame colors: Chrome, Ruby Red & Black





	Mirra Pro	Blammo	Master	Mirra Flair	Shredder
Frame	Mirra Pro Series Full Crmo Tubing	Mirra Pro Series Full Crmo Tubing	Master Full Crmo Tubing	Mirra Pro Series Full Crmo Tubing	Haro Shredder Full Crmo Tubing
Fork	MegaFork Full Crmo w/CNC Steerer	MegaFork Full Crmo w/CNC Steerer	Ground Zero Full Crmo	MegaFork Full Crmo	MegaFork Full Crmo
Head Set	Dia-Compe Tank 1 1/8"	Dia-Compe Tank 1 1/8"	Dia-Compe SB 1 1/8"	Dia-Compe SB 1 1/8"	Dia-Compe SB 1 1/8"
Sprocket/Spider	Haro MegaNuke Made in USA	Haro Nuke Ring Alloy 44t	Haro Nuke Alloy 37t Made in USA	Haro Nuke Ring Alloy 44t	Haro Nuke Ring Alloy 44t
Crank Set	Fusion Tubular Crmo 175mm	Fusion Tubular Crmo 175mm	Fusion Tubular Crmo 165mm	Haro Forged Crmo 3-Piece	Haro Forged Crmo 3-Piece
Bottom Bracket	Sealed Cartridge w/Heat Treated Axle	Sealed Cartridge w/Heat Treated Axle	Sealed Cartridge w/Heat Treated Axle	Ball Bearing w/Heat Treated Crmo Axle	Ball Bearing w/Heat Treated Crmo Axle
Handlebar	Haro Mirra Bar Full Crmo	Haro Kneesaver II Full Crmo	Haro Mirra Bar Full Crmo	Sledgehammer Full Crmo	Sledgehammer Full Crmo
Stem	Haro Big Block F/S	Haro Big Block F/S	Haro Big Block F/S	Haro Big Block F/S	Haro Big Block F/S
Grip	Haro Multi Grip	Haro Multi Grip	Haro Multi Grip	Haro Multi Grip	Haro Multi Grip
Front Hub	Haro MegaHub w/Cartridge Bearings	MegaHub w/Cartridge Bearings	Haro MegaHub w/Cartridge Bearings	Haro FatHubs 1/2" Crmo Axle	Haro FatHubs 1/2" Crmo Axle
Rear Hub	Haro MegaHub w/Cartridge Bearings	MegaHub w/Cartridge Bearings	Haro Freesoaster	Haro FatHubs 1/2" Crmo Axle	Haro FatHubs 1/2" Crmo Axle
Rim	Haro Heffer 3 CP 48h	Haro Heffer 3 CP 48h	Haro Heffer 3 CP 48h	Haro Heffer Chrome Plated 48h	Haro Heffer 48h
Spokes	13g Stainless	13g Stainless	13g Stainless	14g UCP	14g UCP
Tire	Multisurface 3 100 psi	Multisurface 3 100 psi	Multisurface 3 100 psi	Multisurface 3 100 psi	Multisurface 3
Front Brake	Dia-Compe AD-996	Dia-Compe AD-996	Dia-Compe AD-996	Dia-Compe AD-996	Tektro 905A U-Brake
Rear Brake	Dia-Compe AD-996	Dia-Compe AD-996	Dia-Compe AD-996	Dia-Compe AD-996	Tektro 905A U-Brake
Brake Lever	Dia-Compe Tech 99	Dia-Compe DC 120	Dia-Compe Tech 99	Tektro 271A	Tektro 287A
Rotor	SST Oryg	SST Oryg	SST Oryg	SST Oryg	SST Oryg
Freewheel	Shimano 16t	Shimano 16t	14t	ACS Main Drive 16t	ACS Main Drive 16t
Chain	KMC Z510	KMC Z510	KMC Z510	KMC Z510	KMC Z410
Saddle	Mirra Landing Pad	Haro Slantnose Padded	Haro Shorty 2-Piece Padded	Mirra Landing Pad	Haro Slantnose Padded
Seat Post	Haro Twin Torque Crmo Micro Adj	Haro Twin Torque Crmo Micro Adj	Haro Twin Torque Crmo Micro Adj	Haro Twin Torque Crmo Micro Adj	Haro Twin Torque Micro Adj
Seat Clamp	Haro Double Ought	Haro Double Ought	Haro Double Ought	Haro Double Ought	Haro Race
Pedals	Haro Big Block	Fusion DX w/Replaceable Pins	Haro Big Block	Fusion DX Alloy	Fusion DX Alloy
Pegs	Megatubes w/Anti-Turn Pins	Megatubes w/Anti-Turn Pins	Ground Round Alloy	Megatube Anti-Turn Front & Rear	Megatube Anti-Turn Front & Rear
Colors	Ruby Red; Pearl White	Black; Green	Pearl White; Loogie	Black; Ano Blue	CP; Cromolive; Sky Blue

Model	Head Angle	Seat Angle	Top Tube		Seat Tube (To Top)		Chain Stay		BB Height		Wheel Base		Stand Over		Weight
Mirra Pro	74.5	70	20.50	520.7	10.83	275	14.13	359	11.38	289	36.18	919	22.75	577.9	38.7
Blammo	74.5	70	20.50	520.7	10.83	275	14.13	359	11.38	289	36.18	919	22.75	577.9	37.5
Master	75	69	19.64	498.8	10.83	275	13.58	345	11.73	298	32.76	832	23.75	603.3	36.8
Mirra Flair	74.5	70	20.50	520.7	10.83	275	14.13	359	11.38	289	36.18	919	23.00	584.2	36.5
Shredder	74	71	20.03	508.7	10.79	274	14.37	365	11.77	299	36.37	923.9	23.00	584.2	35.6

*All dimensions center-to-center unless otherwise noted. Dimensions provided inches/millimeters. ** Chainstay and Wheelbase dimensions given as minimum lengths. Maximum lengths are up to .78"/20mm longer.



	Mirra 540	Zippo	Revo Mag	Revo
Frame	Haro Mirra Pro Series 3 Tube Crmo	Haro Shredder Shorty 3 Tubes Crmo	Haro Shredder Shorty S/T Crmo	Haro Shredder Shorty S/T Crmo
Fork	Haro Straight Shooter Crmo Steerer	Haro Straight Shooter Crmo Steerer	Haro Straight Shooter	Haro Straight Shooter
Head Set	Dia-Compe SB 1 1/8"	Dia-Compe SB 1 1/8"	Dia-Compe SB 1 1/8"	Dia-Compe SB 1 1/8"
Sprocket/Spider	Haro Steel 44t	Haro Steel 44t	Haro Steel 44t	Haro Steel 44t
Crank Set	Haro MegaCrank OPC Crmo	Haro MegaCrank OPC Crmo	Haro MegaCrank OPC	Haro MegaCrank OPC
Bottom Bracket	Fusion Sealed Mech. OPC	Fusion Sealed Mech. OPC	Fusion Sealed Mech. OPC	Fusion Sealed Mech. OPC
Handlebar	Sledgehammer Full Crmo	Sledgehammer	Sledgehammer	Sledgehammer
Stem	Haro Big Block F/S	Haro Big Block F/S	Fusion Clamp-On	Fusion Clamp-On
Grip	Haro Multi Grip	Haro Multi Grip	Haro Multi Grip	Haro Multi Grip
Front Hub	Haro FatHubs 1/2" Crmo Axle	Haro FatHubs 1/2" Crmo Axle	OGK Stream 3-Spoke	OS Powder Coated Steel w/1/2" Axle
Rear Hub	Haro FatHubs 1/2" Crmo Axle	Haro FatHubs 1/2" Crmo Axle	OGK Stream 3-Spoke w/Cassette	OS Powder Coated Steel w/1/2" Axle
Rim	Haro Heffer 48h	Haro Heffer 48h		Haro RC3 Alloy 48h
Spokes	14g UCP	14g UCP		14g UCP
Tire	Multisurface 3	Multisurface 2	Multisurface 2	Multisurface 2
Front Brake	Tektro 906A U-Brake	Tektro 906A U-Brake	Tektro 906A U-Brake	Tektro 906A U-Brake
Rear Brake	Tektro 906A U-Brake	Tektro 906A U-Brake	Tektro 906A U-Brake	Tektro 906A U-Brake
Brake Lever	Tektro 287A	Tektro 287A	Tektro 287A	Tektro 287A
Rotor	SST Oryg	SST Oryg	SST Oryg	SST Oryg
Freewheel	ACS Main Drive 16t	ACS Main Drive 16t	16t	ACS Main Drive 16t
Chain	KMC Z410	KMC Z410	KMC Z410	KMC Z410
Saddle	Mirra Landing Pad	Haro Shorty 2-Piece Padded	Haro Shorty 2-Piece Padded	Haro Shorty 2-Piece Padded
Seat Post	Fusion Steel Micro Adj	Fusion Steel Micro Adj	Fusion Straight Steel	Fusion Straight Steel
Seat Clamp	Haro Race	Haro Race	Haro Race	Haro Race
Pedals	Fusion DX Alloy	Fusion DX Alloy	Fusion DX Resin	Fusion DX Resin
Pegs	Fusion Megatube Anti-Turn Pins	Fusion Megatube Anti-Turn Pins	Fusion Megatube Anti-Turn Pins	Fusion Megatube Anti-Turn Pins
Colors	CP; Ruby Red; Loogie; Yellow	CP; AnoBlue; Yellow	Ruby Red	CP; Ruby Red; Black

Model	Head Angle	Seat Angle	Top Tube		Seat Tube (To Top)		Chain Stay		BB Height		Wheel Base		Stand Over		Weight
Mirra 540 Air	74.5	70	20.50	520.7	10.83	275	14.13	359	11.38	289	36.18	919	22.75	577.9	35
Zippo	74	71	19.49	495	10.79	274	14.25	362	11.77	299	35.95	913.2	22.75	577.9	34.3
Revo Mag	74	71	19.49	495	10.79	274	14.25	362	11.77	299	35.95	913.2	22.75	577.9	35.9
Revo	74	71	19.49	495	10.79	274	14.25	362	11.77	299	35.95	913.2	22.75	577.9	33.1

*All dimensions center-to-center unless otherwise noted. Dimensions provided inches/millimeters. ** Chainstay and Wheelbase dimensions given as minimum lengths. Maximum lengths are up to .78"/20mm longer.



Name: Dave Mirra

Nickname: "Miracle Boy"

Hometown: Syracuse, NY.

Now Resides: Greenville, NC.

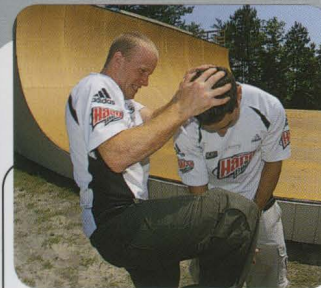
Competing Class: Pro Street and Pro Vert.

Bike: Y2K Haro Mirra Pro Model.

Best Results:
 1997 ESPN X-Games Street Gold Medallist
 1997 ESPN X-Games Vert Gold Medallist
 1998 ESPN X-Games Street Gold Medallist
 1998 ESPN X-Games Vert Gold Medallist
 1998 ESPN X-Games Vert Doubles Gold Medallist
 1998 ESPN X-Games Athlete of the Games
 1998 BMX Plus! Freestyler of the Year
 1998 Bicycle Stunts Series overall Champion-Street
 1998 Bicycle Stunts Series overall Champion-Vert

Best Trick: Flairs, Opposite Airs, One Handed Tailwhips.

Other Interests: Cleaning his house, Golf, challenging Ryan Nyquist to anything, harassing Haro employees.



Name: Ryan Nyquist

Hometown: Los Gatos, Ca.

Now Resides: Greenville, NC.

Birth-date: March 6th, 1979

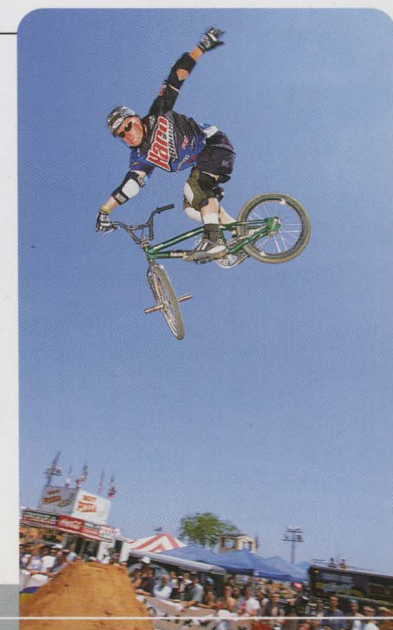
Competing Class: Pro Street, Vert, and Dirt

Bike: Y2K Haro Nyquist Backtrail Pro.

Best Results:
 1997 ABA King of Dirt Champion
 1997 ESPN X-Games Dirt Jump Bronze Medallist
 1998 Cactus Cup Dirt Jump Champion
 1998 ESPN X-Games Dirt Jump Silver Medallist
 1998 NBL Dirt Circuit Dirt Jump Champion
 1998 ABA King of Dirt Champion
 1998 ABA Invitational King of Dirt Champion

Best Trick: Bar-Spin Back-Flip, Triple Trucks, No Footed Can's.

Other Interests: Washing his car, cleaning his bike, sewing, abusing rental cars, candy, soda, challenging Dave Mirra to anything.



Dirt jumping has turned the BMX world upside down, literally. And Ryan Nyquist has been crowned the King of Dirt more than once. When it comes to versatility, durability and performance the new Nyquist inspired Backtrail series of dirt bikes will flip you out. Massive tubes, uncompromising construction and Ryan's personal recommendation are standard equipment.



Frame colors: Sky Blue & Candy Green



BACKTRAIL PRO



The bike Ryan inspired. The all new Backtrail. The bike that won two King of Dirt titles during it's development. It rules

- New BackTrail frame design by Ryan Nyquist
- Haro MegaNuke 10mm thick chainring
- Haro Heffer 3 rims with MegaHubs
- New Haro Catapult tires
- Haro Jackhammer cromoly bars
- Haro Big Block pedals
- SST Oryg w/Dia-Compe 996 u-brake





Frame colors: Cromolive & Ruby Red

BACKTRAIL X3

With its CRMO frame, humongous tubes, double thick dropouts and heatube the X3 is built to take anything you can dish out.

- Same full cromoly frame as BackTrail Pro
- Cromoly Straight Shooter fork
- New Haro forged cromoly cranks
- Haro Heffer rims with Catapult tires
- Haro Jackhammer cromoly bars
- Haro Landing Pad seat
- SST Oryg w/Dia-Compe 996 u-brake
- Dia-Compe Tank Aheadset



Frame colors: Chrome, Yellow, Team Blue & Candy Green

BACKTRAIL X2

The X2 uses the same Backtrail frame geometry as the Pro model, but at a price that lands a little closer to your budget.

- Haro cromoly Sledgehammer bar
- Heffer rims with 1/2" axle FatHubs
- New Haro Catapult tires
- Fusion alloy platform pedal
- SST Oryg rotor



BACKTRAIL X1

Frame colors: Chrome, Black & Loogie

All new and spec'd to prove that once again, entry level bikes don't have to be boring or expensive.

- New Model for Y2k
- Dia-Compe headset
- SST Oryg Rotor
- Tektro u-brake
- Alloy Haro RC3 rims w/1/2" axle hub
- New Haro Catapult tires



	Back Trail Pro	Back Trail X3	Back Trail X2	Back Trail X1
Frame	Haro BackTrail Pro Full Crmo Tubing	Haro BackTrail Pro Full Crmo Tubing	Haro BackTrail 3 Tubes Crmo	Haro BackTrail S/T Crmo
Fork	Straight Shooter Full Crmo w/CNC Steerer	Straight Shooter Full Crmo	Straight Shooter Full Crmo	Straight Shooter Crmo Steerer
Head Set	Dia-Compe Tank 1 1/8"	Dia-Compe Tank 1 1/8"	Dia-Compe SB 1 1/8"	Dia-Compe SB 1 1/8"
Sprocket/Spider	Haro MegaNuke Made in USA	Haro Nuke Ring Alloy 44t	Haro Steel	Haro Steel
Crank Set	Fusion Tubular Crmo 180mm	Haro Forged Crmo 3-Piece	Haro MegaCrank OPC Crmo	Haro MegaCrank OPC
Bottom Bracket	Sealed Cartridge w/Heat Treated Crmo Axles	TH Ball Bearing w/Heat Treated Crmo Axle	Fusion Sealed Mech. OPC	Fusion Sealed Mech. OPC
Handlebar	Jack Hammer Full Crmo	Jack Hammer Full Crmo	Sledgehammer Full Crmo	Sledgehammer
Stem	Haro Big Block F/S	Haro Big Block F/S	Haro Big Block F/S	Fusion Clamp-On
Grip	Haro Multi Grip	Haro Multi Grip	Haro Multi Grip	Haro Multi Grip
Front Hub	Haro MegaHub w/Cartridge Bearings	Haro FatHubs 1/2" Crmo Axle	Haro FatHubs 1/2" Crmo Axle	OS Powder Coated Steel w/1/2" Axle
Rear Hub	Haro MegaHub w/Cartridge Bearings	Haro FatHubs 1/2" Crmo Axle	Haro FatHubs 1/2" Crmo Axle	OS Powder Coated Steel w/1/2" Axle
Rim	Haro Heffer 3 CP 48h	Haro Heffer 2 CP 48h	Haro Heffer 2 48h	Haro RC3 Alloy 48h
Spokes	13g Stainless	13g Stainless	14g UCP	14g UCP
Tire	Haro Catapult 2.25 Front/2.1 Rear	Haro Catapult 2.25 Front/2.1 Rear	Haro Catapult 2.25 Front/2.1 Rear	Haro Catapult 2.25 Front/2.1 Rear
Front Brake	N/A	N/A	N/A	N/A
Rear Brake	Dia-Compe AD-996	Dia-Compe AD-996	Tektro 906A U-Brake	Tektro 906A U-Brake
Brake Lever	Dia-Compe Tech 77	Tektro 271A	Tektro 287A	Tektro 287A
Rotor	SST Oryg	SST Oryg	SST Oryg	SST Oryg
Freewheel	Shimano 16t	ACS Main Drive 16t	ACS Main Drive 16t	ACS Main Drive 16t
Chain	KMC Z510	KMC Z510	KMC Z410	KMC Z410
Saddle	Haro Landing Pad	Haro Landing Pad	Haro Landing Pad	Haro Landing Pad
Seat Post	Haro Twin Torque Crmo Micro Adj	Haro Twin Torque Crmo Micro Adj	Fusion Steel Micro Adj	Fusion Straight Steel
Seat Clamp	Haro Double Ought	Haro Double Ought	Haro Double Ought	Haro Double Ought
Pedals	Haro Big Block	Haro Big Block	Fusion DX Alloy	Fusion DX Resin
Pegs	None	None	None	None
Colors	Sky Blue; Candy Green	Cromolive; RubyRed	CP; Y2Blue; Yellow; Cany Green	CP; Black; Loogie

Model	Head Angle	Seat Angle	Top Tube		Seat Tube (To Top)		Chain Stay		BB Height		Wheel Base		Stand Over		Weight
BackTrail Pro	74.5	70	20.60	523.2	10.26	260.5	14.13	358.9	11.57	294	36.32	922.61	23.50	596.9	35.5
Back Trail X3	74.5	70	20.60	523.2	10.26	260.5	14.13	358.9	11.57	294	36.32	922.61	23.50	596.9	34.8
Back Trail X2	74.5	70	20.60	523.2	10.26	260.5	14.13	358.9	11.57	294	36.32	922.61	23.50	596.9	33
Back Trail X1	74.5	70	20.60	523.2	10.26	260.5	14.13	358.9	11.57	294	36.32	922.61	23.50	596.9	32.1

*All dimensions center-to-center unless otherwise noted. Dimensions provided inches/millimeters. ** Chainstay and Wheelbase dimensions given as minimum lengths. Maximum lengths are up to .78"/20mm longer.

Mike King, Jamie Staff and a talented group of amateur racers have contributed to developments like our revolutionary Monocoque frame and more recently, the split extrusion SR-71. These developments have advanced both the technology and performance of BMX racing. And what we've learned from that technology and performance is used in producing the new products you'll see featured here like the T-Bone and SR Series of racing bikes.



GROUP 1 SR3.0



Frame colors: Blue/BB & White/Blue



The shape of things to come. The same awesome looks of our exotic SR-71 split extrusion frame. Equipped to cross the line - first.

- New SR frame borrows design elements from our super exotic SR-71 extruded frame
 - Integrated chain tensioners
- Fusion 3-piece crankset w/pinch bolt
- Mavic rims with sealed bearing hubs
 - Shimano DX V-Brakes
 - Haro Flashback tires
 - Haro Big Block pedals



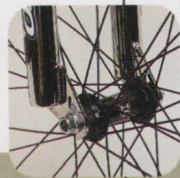


Frame colors: Blue/BB & Black/Yellow

GROUP 1 SR2.0 24

The Group 1 SR 2.0 24 cruiser is ready to race, and win, right out of the box. Its jaw dropping looks may just stop your competition in their tracks.

- Revised cruiser geometry by Mike King
- New Haro forged cromoly 3-piece crankset
- New Haro Big Block forged BMX stem
- Tekro direct pull brakes



Frame colors: Red/BB & Black/Yellow

GROUP 1 SR2.0

The Group 1 SR 2.0 is ready to race, and win, right out of the box. Its jaw dropping looks may just stop your competition in their tracks.

- Frame design inspired by our SR-71 frame
- Integrated chain tensioners
- New Haro forged cromoly 3-piece crankset
- Tekro direct pull brakes
- Haro Flashback tires





Frame colors: Black/BB, Black/Red & Green/Green

GROUP 1 SR1.0

You might think that an aluminum bike that will turn heads like the SR 1.0 is expensive. Think again. Talk about cheap thrills, this is it.

- Frame design inspired by our SR-71 frame
- Haro D-Staybilizer chainstays with integrated chain tensioners
- Haro Holeshoot A-6 lo-profile tires
- Dia-Compe Aheadset
- Sledgehammer bars



Name: Mike King
Nickname: "Iron Mike"
Hometown: San Diego, Ca.
Birth-date: 06/30/69
Competing Class: AA Pro, Pro Downhill, and Pro Dual Slalom.
Bike: Haro Monocoque (BMX), Haro DH Prototype (DH)
 Haro Mike King Dual Slalom (DS).

Best Results: Downhill/Dual Slalom World Champion
 Dual Slalom National Champion
 4 time US National Team Member
 12 Time BMX Champion
 4 Career NORBA NCS Downhill Victories
 7 Career NORBA NCS Dual Slalom Victories
 1 Career UCI World Cup Downhill Victory
 1 Career UCI World Cup Dual Victory

Best Track: Metabief / France (DH), Sea Otter Classic (DS), ABA Tulsa, Ok 1984(BMX).

Haro's Comments: The year was 1988, Mike King became the first BMX racer ever to win back to back Amateur/Pro titles in the ABA. In his rookie Pro season, Mike won the title that made him a living legend. He did it on a Haro. Then in 1995, again in a rookie Pro season, on a Mountain Bike this time, Mike pulled off the unthinkable...A World Championship Downhill Title. Now, back on Haro, and feeling at home again, Mike has made it a goal to prove that he has what it takes to regain a National title. What does Haro think? Just wait...



Name: Jamie Staff
Nickname: "Thunder Thighs"
Hometown: Ashford, England
Resides: Vista, Ca.
Birth-date: 4-30-73
Competing Class: AA Pro
Bike: HARO "Y2K" SR-71 Extruded Aluminum frame
Best Results: 1995 European Champion
 1996 UCI World Cup Champion
 1996 UCI World Champion
 1997 Australian World Cup Champion
 1997 ABA Fallnational Winner
Best Track: ABA Phoenix, AZ.
Other Interests: Weight Training, Mountain Biking, Golf.

Haro's Comments: In the 1997 and 1998 seasons, Jamie went through 4 major injuries. Now that all the broken bones have healed, Jamie's comeback plan has put him at the top of the Pro class once again. With consistent places and an AA Pro win thus far in the 1999 season, Jamie is looking for something a little bigger than what he has already accomplished in his career...an American National Title... We think he's on his way to fulfilling his dream.





Frame colors: White & Team Blue only

GROUP 1 AL MINI & JUNIOR

Want big performance from a small bike? Check out our new AL Mini & AL Junior.

- Forged 3-Piece Fusion 155mm cranks on Mini
- Forged 3-Piece Fusion 165mm cranks on Junior
- Aluminum 17 1/2 pound racer
- Sealed bearing Haro race hubs
- Ritchey Speedmax tires
- Tektro Mini direct pull brakes
- Alloy junior bar w/crossbar



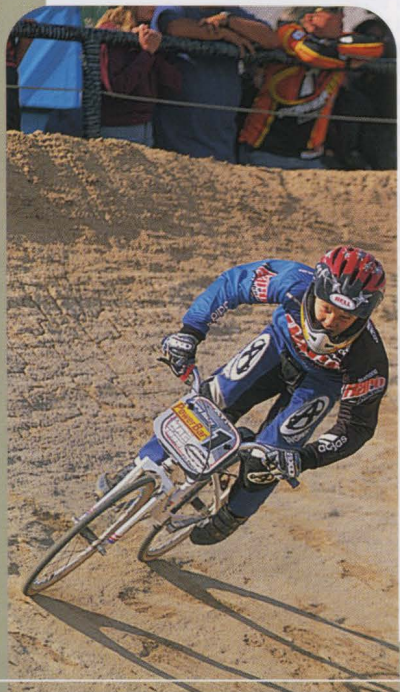
GROUP 1 CR MINI

Want performance from a small bike? Check out the CR mini. This pint sized rocket packs a punch and now is more affordable than ever.

- Full cromoly Mini
- Alloy rims and hubs
- Ritchey Speedmax tires
- Forged 3-Piece Fusion 155mm cranks
- Tektro Mini direct pull brakes



Frame colors: Chrome & Black



2000

BMX



Frame colors: BB & Team Blue

T-BONE PRIME

This is one tasty ride. Exotic looks. Premium specs. Podium performance. Sink your teeth into a T-Bone Prime.

- 7005 alloy T-Bone frame
- New Haro forged cromoly 3-piece crankset
- Haro DX alloy pedals
- Double wall alloy rims
- New Haro Flashback tires
- Tektro direct pull brakes



BMX

2000

T-BONE CHOICE 24

T-Bone Choice cruiser. Get your fill of performance with its beefy construction and quality components. Satisfying. For heartier appetites.

- New alloy T-Bone Cruiser frame with geometry by Mike King
- Full cromoly cruiser fork
- Haro Nuke Ring w/180mm cromoly 1-pc MegaCrank
- Haro cromoly Sledgehammer cruiser bar
- Fusion alloy pedals w/cromoly axle

Frame color: Ruby Red



2000

BMW



Frame colors: Ruby Red & Ano Blue

T-BONE CHOICE

Choice. Now aluminum for Y2K. Get your fill of performance with its beefy construction and quality components. Satisfying. For heartier appetites,

- New! The Choice served with an aluminum frame
- Haro Nuke Ring w/1-pc cromoly Haro MegaCrank
- Haro RC3 alloy rims w/Haro Holeshot A-6 tires
- Fusion alloy pedals w/cromoly axle
- Tektro alloy direct-pull brakes



BMW

2000

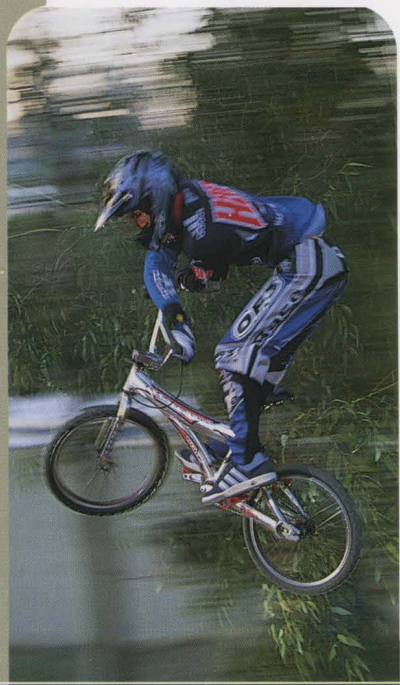


Frame colors: Chrome, Mustard & Black

T-BONE SELECT

Hungry for a bike that's versatile, bullet proof and won't take a big bite out of your savings account? Order up a T-Bone Select. It's well-done.

- Gussetted cromoly steel T-Bone frame
- Dia-Compe threadless headset
- Tektro alloy direct pull brakes
- Haro Holeshot A-6 tires
- Haro Slantnose padded saddle



2000

BMX

MINI BONE

T-Bone styling in a smaller portion. The MiniBone fits younger riders with its low profile frame design.

- New member of the Bone family
- Lo-Profile frame has increased standover height for beginners
- Hand operated direct pull brakes combine with foot operated coaster brake for sure stopping
- Haro Padded seat
- Haro Holedshot tires
- CPSC reflectors

Frame colors: Black & Pearl Green

SPECS & GEOMETRY

Frame	Haro Mini Bone
Fork	BMX
Head Set	YST 1" BMX
Sprocket/Spider	Haro 40t
Crank Set	Dotek 140mm
Bottom Bracket	Fusion Sealed Mech. OPC
Handlebar	BMX Jr.
Stem	Fusion BMX
Grip	Haro Mini Logo
Front Hub	Steel 36h
Rear Hub	KT Coaster 36h
Rim	Alex Y-2000 Alloy
Spokes	14g UCP
Tire	Haro Holedshot A-6
Rear Brake	Tektro 919A
Brake Lever	Tektro 317A
Chain	KMC 410
Saddle	Padded
Seat Post	Fusion Straight Steel
Seat Clamp	UCP Bolt
Pedals	Resin
Padset	Haro 3-Piece Padset
Colors	Black; Pearl Green



Model	Head Angle	Seat Angle	Top Tube		Seat Tube (To Top)		Chain Stay		BB Height		Wheel Base		Stand Over		Weight
MiniBone	71	70.5	17.62	447.5	9.65	245	15.35	390	9.45	240	35.67	906	21.50	546.1	26.6

*all dimensions center-to-center unless otherwise noted. Dimensions provided inches/millimeters ** Chainstay and Wheelbase dimensions given as minimum lengths. Maximum lengths are up to .78"/20mm longer.

BMX

2000

MICRO BONE

Straight from the kid's menu. The MicroBone delivers big features for little riders.

- New member of the Bone family
- 16" wheels for first time riders
- Sturdy training wheels
- Padded Haro saddle
- CPSC reflectors

Frame colors: Black & Ano Blue



SPECS & GEOMETRY

Frame	Haro Micro Bone
Fork	BMX
Head Set	YST 1" BMX
Sprocket/Spider	Haro 36t
Crank Set	Dotek OPC 102mm
Bottom Bracket	Fusion Sealed Mech. OPC
Handlebar	BMX Jr.
Stem	Fusion BMX
Grip	Haro Mini Logo
Front Hub	Steel 28h
Rear Hub	KT Coaster 28h
Rim	CMC 7X Steel
Spokes	14g UCP
Tire	Kenda K-50 16"
Rear Brake	Tektro Caliper
Brake Lever	Tektro Reach Adjust
Chain	KMC 410
Saddle	Padded
Seat Post	Fusion Straight Steel
Seat Clamp	UCP Bolt
Pedals	Resin
Misc	Sturdy Training Wheels
Padset	Haro 3-Piece Padset
Colors	Black; AnoBlue

Model	Head Angle	Seat Angle	Top Tube		Seat Tube (To Top)		Chain Stay		BB Height		Wheel Base		Stand Over		Weight
MicroBone	70	70	14.40	365.8	8.58	218	11.40	289.6	9.30	236.2	28.43	722	17.00	431.8	23.3

*All dimensions center-to-center unless otherwise noted. MicroBone weighed w/o training wheels. Dimensions provided inches/millimeters ** Chainstay and Wheelbase dimensions given as minimum lengths. Maximum lengths are up to .78"/20mm longer.

Haro
BikesHaro
Bikes



	Group 1 SR 3.0	Group 1 SR 2.0 Cruiser	Group 1 SR 2.0	Group 1 SR 1.0	Group 1 AL Junior
Frame	Pro XL Y2K Alloy 7005	Pro Cruiser Y2K Alloy 7005	Pro Y2K Alloy 7005	Pro Y2K Alloy 7005	Junior Y2K Alloy 7005
Fork	Haro BMX Full Crmo	Haro BMX Full Crmo	Haro BMX Full Crmo	Haro BMX Full Crmo	Haro BMX Mini Full Crmo
Head Set	Dia-Compe Se 1 1/8"	Dia-Compe Se 1 1/8"	Dia-Compe Se 1 1/8"	Dia-Compe Se 1 1/8"	Dia-Compe STS 1"
Sprocket/Spider	Haro Nuke Ring Alloy 44t	Haro Nuke Ring Alloy 40t	Haro Nuke Ring Alloy 44t	Haro Nuke Ring 44t	Fusion Race Ring 42t
Crank Set	Fusion Tubular Crmo 180mm	Haro Forged Crmo 3-Piece 180mm	Haro Forged Crmo 3-Piece 180mm	Haro MegaCrank OPC Crmo 175mm	Fusion 3-Piece Alloy 165mm
Bottom Bracket	Sealed Cartridge w/Heat Treated Axle	Ball Bearing w/Heat Treated Crmo Axle	Ball Bearing w/Heat Treated Crmo Axle	Fusion Sealed Mech. OPC	TH Cartridge
Handlebar	Sledgehammer Full Crmo	Sledgehammer Lo Full Crmo	Sledgehammer Full Crmo	Sledgehammer	Haro Alloy Junior Riser
Stem	Haro Big Block BMX	Haro Big Block BMX	Haro Big Block BMX	Fusion Clamp-On	Fusion Mini Clamp-On
Grip	Haro Super Logo w/Flange	Haro Super Logo w/Flange	Haro Super Logo w/Flange	Haro Super Logo w/Flange	Haro Mini Logo w/Flange
Front Hub	Haro Sealed Bearing 36h	Alloy Rubber Sealed 36h	Alloy Rubber Sealed 36h	Alloy Rubber Sealed 36h	Haro Sealed Bearing 32h
Rear Hub	Haro Sealed Bearing 36h	Alloy Rubber Sealed 36h	Alloy Rubber Sealed 36h	Alloy Rubber Sealed 36h	Haro Sealed Bearing 32h
Rim	Mavic XY	Haro RC3 Alloy Black	Haro RC3 Alloy Black	Haro RC3 Alloy Black	Haro RC3 Alloy Black
Spokes	14g Stainless	14g Black	14g Black	14g Black	15g Stainless
Tire	Haro Flashback	Kenda K-50 24"	Haro Flashback	Haro Holeshot A-6	Ritchey SpeedMax 20 x 1 3/8"
Front Brake	N/A	N/A	N/A	N/A	N/A
Rear Brake	Shimano DX	Tektro 918A	Tektro 918A	Tektro 918A	Tektro 917 A Mini-V
Brake Lever	Shimano DX	Tektro 317A	Tektro 317A	Tektro 317A	Tektro 316A
Dropout Saver	Integrated Chain Tensioner	Integrated Chain Tensioner	Integrated Chain Tensioner	Integrated Chain Tensioner	Integrated Chain Tensioner
Freewheel	Shimano 16t	ACS Main Drive 17t	ACS Main Drive 16t	ACS Main Drive 16t	ACS Main Drive 16t
Chain	KMC Z610H	KMC Z410	KMC Z410	KMC Z410	KMC Z610
Saddle	Haro Race Seat	Haro Race Seat	Haro Race Seat	Haro Race Seat	Haro Unibody Padded
Seat Post	Haro Race Post	Haro Micro Adj. Alloy	Haro Micro Adj. Alloy	Haro Straight Alloy	Alloy w/Seat
Seat Clamp	Haro Race Lite	Haro Race Lite	Haro Race Lite	Haro Race Lite	Haro Race Lite
Pedals	Haro Big Block	Fusion DX Alloy	Fusion DX Alloy	Fusion DX Resin	Wellgo LU-965 Mini Alloy
Padset	None	None	None	None	None
Colors	Y2Blue/Ball Burnished; White/Y2Blue	Y2Blue/BB; Black/Yellow	Red/BB; Black/Yellow	Black/BB; Green/Green; Black/Red	White/Blue

Model	Head Angle	Seat Angle	Top Tube	Seat Tube (To Top)		Chain Stay	BB Height		Wheel Base		Stand Over		Weight		
Group 1 SR 3.0	74.5	72	21.43	544.3	12.01	305	14.76	375	11.77	299	37.70	957.5	23.25	590.6	26.7
Group 1 SR 2.0 24	73.5	71	21.87	555.6	12.99	330	15.67	398	11.69	297	38.95	989.40	25.50	647.7	27.3
Group 1 SR 2.0	74.5	72	20.65	524.5	12.01	305	14.76	375	11.77	299	36.91	937.4	23.25	590.6	26.8
Group 1 SR 1.0	74.5	72	20.65	524.5	12.01	305	14.76	375	11.77	299	36.91	937.4	23.25	590.6	26
Group 1 AL Junior	73	71	18.70	475	10.24	260	13.54	344	10.94	278	34.11	866.4	21.25	539.75	17.6

*All dimensions center-to-center unless otherwise noted. Dimensions provided inches/millimeters. ** Chainstay and Wheelbase dimensions given as minimum lengths. Maximum lengths are up to .78"/20mm longer.



	Group 1 AL Mini	Group 1 CR Mini	T-Bone Prime	T-Bone Choice Cruiser	T-Bone Choice	T-Bone Select
Frame	Mini Y2K Alloy 7005	Haro Mini Full Crmo	T-Bone Alloy	T-Bone Alloy Cruiser	T-Bone Alloy	T-Bone 1 Tube Crmo
Fork	Haro BMX Mini Full Crmo	Haro BMX Mini Full Crmo	Haro BMX Full Crmo	Haro BMX Full Crmo	Haro BMX Full Crmo	Haro BMX Crmo Steerer
Head Set	Dia-Compe STS 1"	Dia-Compe STS 1"	Dia-Compe Se 1 1/8"	Dia-Compe Se 1 1/8"	Dia-Compe Se 1 1/8"	Dia-Compe Se 1 1/8"
Sprocket/Spider	Fusion Race Ring 42t	Fusion Race Ring 42t	Haro Nuke Ring Alloy 44t	Haro Nuke Ring Alloy 40t	Haro Nuke Ring 44t	Haro Nuke Ring 44t
Crank Set	Fusion 3-Piece Alloy 155mm	Fusion 3-Piece Alloy 155mm	Haro Forged Crmo 3-Piece	Haro MegaCrank OPC Crmo	Haro MegaCrank OPC Crmo	Haro MegaCrank OPC Crmo
Bottom Bracket	TH Cartridge	TH Cartridge	Ball Bearing w/Heat Treated Crmo Axle	Fusion Sealed Mech. OPC	Fusion Sealed Mech. OPC	Fusion Sealed Mech. OPC
Handlebar	Haro Alloy Mini Riser	Haro Alloy Mini Riser	Sledgehammer Crmo	Sledgehammer Crmo Cruiser	Sledgehammer	Sledgehammer
Stem	Fusion Mini Clamp-On	Fusion Mini Clamp-On	Haro Big Block BMX	Fusion Clamp-On	Fusion Clamp-On	Fusion Clamp-On
Grip	Haro Mini Logo w/Flange	Haro Mini Logo w/Flange	Haro Mini Logo	Haro Mini Logo	Haro Mini Logo	Haro Mini Logo
Front Hub	Haro Sealed Bearing 32h	Alloy Rubber Sealed 32h	Alloy Rubber Sealed	Alloy Rubber Sealed	Alloy Rubber Sealed	Alloy Rubber Sealed
Rear Hub	Haro Sealed Bearing 32h	Alloy Rubber Sealed 32h	Alloy Rubber Sealed	Alloy Rubber Sealed	Alloy Rubber Sealed	Alloy Rubber Sealed
Rim	Haro RC3 Alloy Black	Alex 20 x 1 3/8"	Alex AL-DM24 Double Wall Black	Haro RC3 Black	Haro RC3 Black	Haro RC3 Alloy
Spokes	15g Stainless	15g Stainless	14g Stainless	14g Stainless	14g UCP	14g UCP
Tire	Ritchey SpeedMax 20 x 1 3/8"	Ritchey SpeedMax 20 x 1 3/8"	Haro Flashback	Kenda K-50 24"	Haro Holeshot	Haro Holeshot
Front Brake	N/A	N/A	None	None	None	None
Rear Brake	Tektro 917 A Mini-V	Tektro 916A Mini V	Tektro 915A	Tektro 918A	Tektro 918A	Tektro 918A
Brake Lever	Tektro 316A	Tektro 316A	Tektro 317A	Tektro 317A	Tektro 317A	Tektro 317A
Dropout Saver	Integrated Chain Tensioner	Integrated Chain Tensioner	N/A	N/A	N/A	N/A
Freewheel	ACS Main Drive 16t	ACS Main Drive 16t	ACS Main Drive 16t	ACS Main Drive 17t	ACS Main Drive 16t	ACS Main Drive 16t
Chain	KMC Z610	KMC Z610	KMC Z510	KMC Z410	KMC Z410	KMC Z410
Saddle	Haro Unibody Padded	Haro Unibody Padded	Haro Slantnose Padded	Haro Slantnose Padded	Haro Slantnose Padded	Haro Slantnose Padded
Seat Post	Alloy w/Seat	Alloy w/Seat	Haro Race Alloy Micro Adj	Haro Alloy Micro Adj	Fusion Straight Alloy	Fusion Straight Steel
Seat Clamp	Haro Race Lite	Haro Race Lite	Haro Race Lite	Haro Race Lite	Haro Race Lite	Haro Race Lite
Pedals	Wellgo LU-965 Mini Alloy	Wellgo LU-965 Mini Alloy	Fusion DX Alloy w/Replaceable Pins	Fusion DX Alloy	Fusion DX Alloy	Fusion DX Alloy
Padset	None	None	Haro Top Tube EVA Molded Foam	Haro Top Tube EVA Molded Foam	Haro Top Tube EVA Molded Foam	Haro Top Tube EVA Molded Foam
Colors	White/Blue	CP; Black/Red	Ball Burnished; Y2Blue	Ruby Red	Ruby Red; Ano Blue	CP; Black; Mustard

Model	Head Angle	Seat Angle	Top Tube		Seat Tube (To Top)		Chain Stay		BB Height		Wheel Base		Stand Over		Weight
Group 1 AL Mini	72	71	17.52	445	9.45	240	13.03	331	10.94	278	32.66	829.6	21.25	539.75	17.6
Group 1 CR Mini	72	71	17.52	445	9.45	240	13.03	331	10.94	278	32.66	829.6	21.00	533.4	18.8
T-Bone Prime	74.5	70	20.62	523.8	12.01	305	14.73	374.1	11.77	299	36.82	935.2	23.25	590.6	27.6
T-Bone Choice Cruiser	73.5	70	21.87	555.6	12.99	330	15.67	398	11.69	297	38.94	989	23.25	590.6	27.3
T-Bone Choice	74.5	70	20.62	523.8	12.01	305	14.73	374.1	11.77	299	36.82	935.2	23.25	590.6	26.3
T-Bone Select	73.5	70	20.31	516	12.01	305	15.04	382	11.77	299	36.93	938	23.25	590.6	28.8

*all dimensions center-to-center unless otherwise noted. Dimensions provided inches/millimeters. ** Chainstay and Wheelbase dimensions given as minimum lengths. Maximum lengths are up to .78"/20mm longer.

2000

TRACK & TRAIL

Versatility, durability, capability. The new Track and Trail (TR2) series was developed for a new breed of rider who wants a bike that can do almost everything well. Race it, ride it, jump it. The steel and chromoly construction will impress you. The prices will amaze you.



TRACK & TRAIL

2000

TR2.3



Frame colors: Chrome, Candy Green & Team Blue

Want a tough CRMO bike that's light enough to race but strong enough to jump? The new TR2.3 is the best of a new breed.

- New Track & Trail series frame design
- Full cromoly frame and fork
- Haro Holeshot A-6 lo-profile tires
- New Haro forged cromoly 3-piece crankset
- Burly 36h wheels w/13g spokes
- Dia-Compe threadless oversize headset



2000

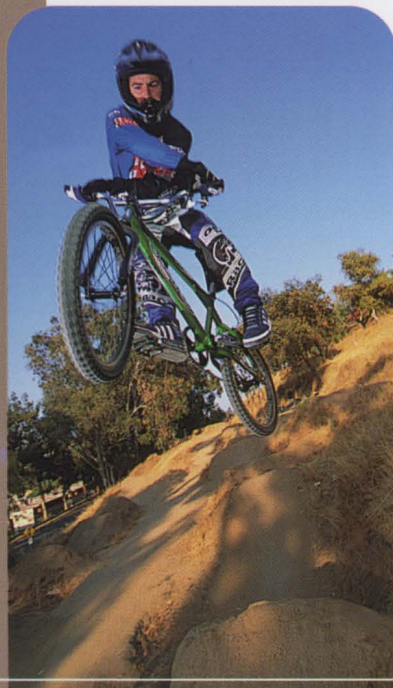
TRACK & TRAIL

TR2.2 24

Steel is real. Especially when there's CRMO involved. The TR2.2 24 cruiser is not only a real versatile performer, it's a real deal.

- Revised cruiser geometry by Mike King
- New Track & Trail frame design
- Tektro direct-pull brakes
- Cromoly Sledgehammer cruiser bar
- Dia-Compe Aheadset

Frame colors: Chrome & Ano Blue



TRACK & TRAIL

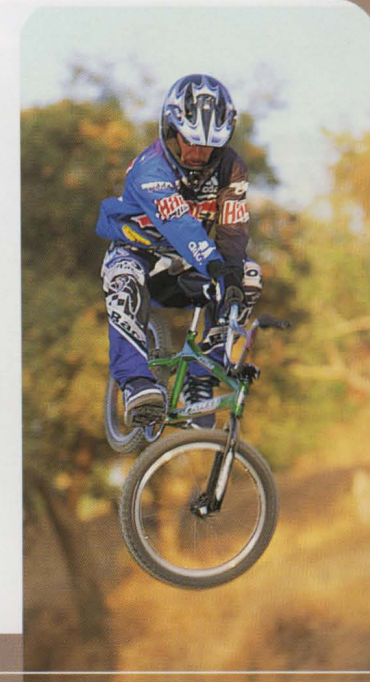
2000

TR2.2

Steel is real. Especially when there's CRMO involved. The TR2.2 is not only a real versatile performer, it's a real deal.

- New Track & Trail frame design
- Haro Holeshot A-6 lo-profile tires
- Heavy duty 36h wheels with 13g spokes
- Tektro direct-pull brakes
- Haro Slantnose padded 2-piece saddle
- Dia-Compe threadless oversize headset

Frame colors: Chrome, Ano Blue & Black





Frame colors: Chrome, Loogie & Ruby Red

TR2.1

The new TR2.1 is our most affordable BMX bike, but don't be fooled by the price. It performs as good as it looks.

- New Track & Trail frame design
- Haro Holeshoot A-6 tires
- Alloy hubs and rims
- Sure stopping Tektro alloy direct pull brakes
- Padded Slantnose Haro 2-piece saddle



	TR2.3	TR2.2 Cruiser	TR2.2	TR2.1
Frame	Haro Y2K Track & Trail Full Crmo Tubing	Haro Y2K Track & Trail 3 Main Tubes Crmo	Haro Y2K Track & Trail 3 Main Tubes Crmo	Haro Y2K Track & Trail S/T Crmo
Fork	Haro BMX Full Crmo	Haro BMX Full Crmo	Haro BMX Crmo Steerer	Haro BMX
Head Set	Dia-Compe Se 1 1/8"	Dia-Compe Se 1 1/8"	Dia-Compe Se 1 1/8"	YST HP-N663 1" BMX X 32.5 CUP
Sprocket/Spider	Haro Nuke Ring Alloy 44t	Haro Nuke Ring 40t	Haro Nuke Ring 44t	Haro Nuke Ring 44t
Crank Set	Haro Forged Crmo 3-Piece	Haro MegaCrank OPC Crmo	Haro MegaCrank OPC Crmo	Fusion 165mm
Bottom Bracket	Ball Bearing w/Heat Treated Crmo Axle	Fusion Sealed Mech. OPC	Fusion Sealed Mech. OPC	Fusion Sealed Mech. OPC
Handlebar	Sledgehammer Crmo	Sledgehammer	Sledgehammer	Sledgehammer
Stem	Haro Big Block BMX	Fusion Clamp-On	Fusion Clamp-On	Fusion BMX
Grip	Haro Multi Grip w/Flange	Haro Multi Grip w/Flange	Haro Multi Grip w/Flange	Haro Multi Grip w/Flange
Front Hub	Haro Mid Flange	Haro Mid Flange	Haro Mid Flange	Alloy
Rear Hub	Haro Mid Flange	Haro Mid Flange	Haro Mid Flange	Alloy
Rim	Haro RC3 Alloy Black/Brushed Sides	Haro RC3 Alloy Black/Brushed Sides	Haro RC3 Alloy Black/Brushed Sides	Haro RC3 Alloy
Spokes	13g	13g	13g	14g UCP
Tire	Haro Holeshoot A-6	Kenda K-50 24"	Haro Holeshoot A-6	Haro Holeshoot A-6
Rear Brake	Tektro 918A	Tektro 918A	Tektro 918A	Tektro 918A
Brake Lever	Tektro 317A	Tektro 317A	Tektro 317A	Tektro 317A
Freewheel	ACS Main Drive 16t	ACS Main Drive 17t	ACS Main Drive 16t	ACS Main Drive 16t
Chain	KMC Z410	KMC Z410	KMC Z410	KMC Z410
Saddle	Haro Slantnose Padded	Haro Slantnose Padded	Haro Slantnose Padded	Haro Slantnose Padded
Seat Post	Haro Micro Adj. Alloy	Fusion Straight Steel	Fusion Straight Steel	Fusion Straight Steel
Seat Clamp	Haro Race	Haro Race	Haro Race	Haro Race
Pedals	Fusion DX Alloy	Fusion DX Alloy	Fusion DX Alloy	Fusion DX Resin
Padset	Haro Top Tube EVA Molded Foam	Haro Top Tube EVA Molded Foam	Haro Top Tube EVA Molded Foam	Haro Top Tube EVA Molded Foam
Colors	CP; Candy Green; Y2Blue	CP; Ano Blue	CP; AnoBlue; Black	CP; RubyRed; Loogie

Model	Head Angle	Seat Angle	Top Tube		Seat Tube (To Top)		Chain Stay		BB Height		Wheel Base		Stand Over		Weight
TR2.3	74	72	21.26	540	11.61	295	14.76	375	11.77	299	37.99	965	23.50	596.9	29.8
TR2.2 Cruiser	73	72	21.89	555.9	12.99	330	15.39	391	11.69	297	39.27	997.5	23.50	596.9	28.6
TR2.2	74	72	20.38	517.6	11.61	295	14.76	375	11.77	299	37.20	945	23.50	596.9	29.2
TR2.1	74	72	20.38	517.6	11.61	295	14.76	375	11.77	299	37.20	945	23.50	596.9	28.5

*all dimensions center-to-center unless otherwise noted. Dimensions provided inches/millimeters. ** Chainstay and Wheelbase dimensions given as minimum lengths. Maximum lengths are up to .78"/20mm longer.

Conventional wisdom is for wimps. Back in 1987 we produced the first V-Bar mountain bike frame followed shortly thereafter by elevated chainstay bikes. Despite the criticism we received for those deviant designs, tons of bikes from those same critics now feature some form of bent or V-Bar style top tube. Elevated chainstays have survived too, it's just that they now pivot and are called swingarms. And to the chagrin of traditional thinkers, Canadian National team member Seamus McGrath and Australian National Champion Paul Rowney and former World Champion downhiller Mike King are proving the performance capabilities of these designs on the World Cup and NORBA circuits.


Haro
Bikes

EXTREME EX2

Haro
Bikes

Frame colors: Tangerine/Black & Ruby Red/BB

No, it's not an illusion, but it is magic. The new Extreme EX2 features dual discs, Rock Shox suspension and a Shimano drivetrain for a price you really won't believe.

- Super-plush long travel trail bike
- Rock Shox Judy XC 100mm Hydracoil fork
- Rock Shox Deluxe 4.25" rear travel shock
- Dia-Tech disc brakes front & rear
- Shimano LX/Deore 9-Speed



2000

ATB

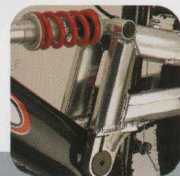


EXTREME EX1

The new EX1 has been totally redesigned. Lucky for you. With a front disc, Manitou fork and 27 speeds we're talkin' some serious equipment.

- Super affordable performance full-suspension bike
- Manitou Magnum 3" travel
- Rock Shox Deluxe 4.25" rear travel shock
- Shimano Deore 9-speed
- Dia-Tech disc brake

Frame colors: Mustard/Red & Pearl Black/BB



ATB

2000

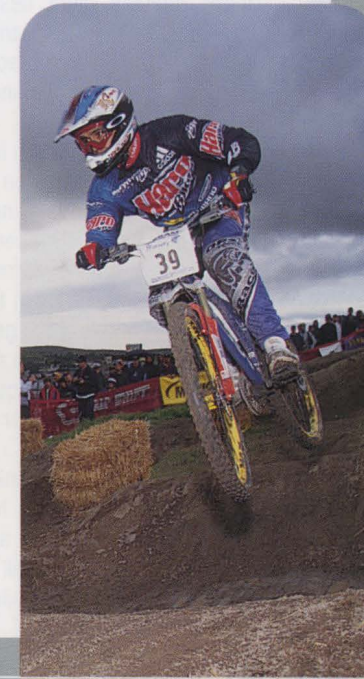


EXTREME EX0

The price for full suspension is going downhill. The EX0 features our proven low forward pivot design, 24 speeds and a lot more... for a lot less the most full suspension bikes.

- Full aluminum frame suspension bike at rock bottom price
 - RST 261 fork and RST 22 rear shock
 - Shimano 24-speed
 - WTB rims with WTB Velociraptor tires

Frame colors: Pearl Green/Black & Ano Blue/BB



LOW FORWARD PIVOT & V-BAR



KEEP IT SIMPLE

There are many schools of thought when it comes to full suspension design. There's active, non-active, Horst links, sweet spots, URTs, struts, beams and who knows what else out there competing for a share of the market. Many require an engineering degree to understand and some require a Swiss bank account to afford.

Unlike multiple pivot designs, Haro's single, low-forward pivot is durable, easy to service and inexpensive to replace. The pivot location forward of the bottom bracket and in line with the large chainring provides an optimum balance between ascending performance and descending performance.

By positioning the pivot in line with the large chainring there is a neutral affect on the suspension when your hammering in the big ring. Biopacing or inch worming is nearly eliminated providing maximum power transfer at high speeds and on flat sections. The benefit - optimum cross country performance from a full suspension design.

On steep, rough climbs in the small chainring the rear wheel is actually pulled down and into the ground with the pedal stroke to provide superior climbing traction. The rear swingarm actually digs in and keeps the tire firmly planted as torque is applied. On descents, the suspension works equally well whether you're in or out of the saddle.

Take a test ride, we think you'll agree that the Extreme's low-forward pivot incorporates an optimum blend of simplicity, all around performance and affordability.



V-BAR STORY

We've been touting our trademark V-Bar top tube design for over ten years. We developed the V-Bar to stand out in market-place filled with look-a-like diamond frame bikes. At first, we encountered a lot of resistance. People said it would break or that it looked weird. Well, it doesn't break and now a days it doesn't look so different. In fact, if you look closely at today's full suspension and high end bikes you'll see more V-type or bent top tubes than straight ones. Of course we're flattered by the imitation but we're also a little concerned that it's getting harder to spot a Haro than it used to be.

Aside from the visual aspects of the V-Bar design there are several tangible benefits.

The V-Bar design provides superior standover height when compared to conventional diamond frames and it facilitates determining which frame size fits you the best. Conventional bikes are sized primarily based on vertical top tube clearance. With the V-Bar's lower standover height, you can focus on top tube length and choosing the size that best suits your style of riding rather than just clearing the top tube by an inch or two.

The V-Bar. It's not complicated and it's not a gimmick. It's a design that Haro pioneered and one we're committed to for the long run.

ESCAPE A7.2



Frame colors: Tangerine & Ball Burnished

Don't let the price fool you. The A7.2 can hold it's own with bikes costing way more. With a front disc, Manitou fork and 24 speeds it's credentials are rock solid.

- Budget price with killer parts package
- Manitou Magnum 3" travel fork
- Dia-Tech disc brake
- WTB rims and tires
- Shimano 24-speed



2009

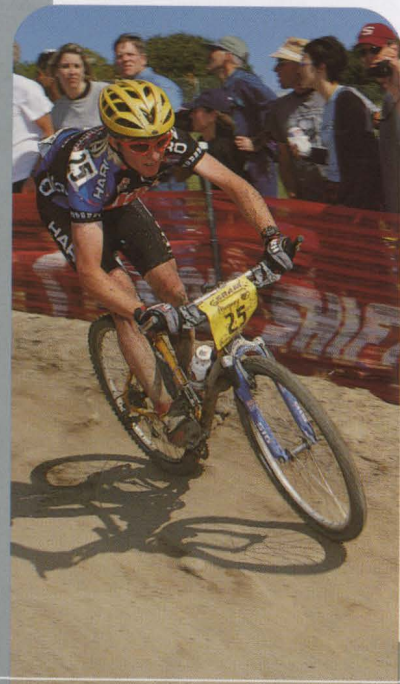
ATB

ESCAPE A7.1



If you're as concerned about performance as you are a balanced budget, check out the Escape A7.1. Its RockShox Jett fork and 24 speed Shimano component package set you up for serious fun without setting you back.

- As easy to pedal as it is on your budget
- Rock Shox Jett fork
- Dia-Compe Aheadset
- Shimano Acera/Alivio 24-Speed
- WTB Primal Raptor tires
- SR Suntour crankset



Frame colors: Mustard; Pearl Black & Ball Burnished

ATB

2009

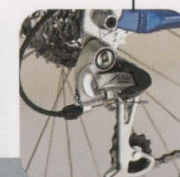
ESCAPE A7.0



Frame colors: Ano Blue, Mango & Ball Burnished

Want a bike that's as light on your checkbook as it is on the trail? Check out the affordable 24 speed aluminum Escape A7.0.

- Performance light weight aluminum frame
- SR Suntour suspension fork
- New Shimano Acera 24 speed
- SR Suntour crankset
- Kenda Kobra dual purpose tires



VECTOR V2

This Vector leans more towards performance than comfort with 24 speeds and upgraded componentry. Take it on or off road with confidence.

- Street or dirt are the playgrounds for the V2
- New Shimano Acera 24 speed
- SR Suntour suspension fork
- Weinmann 519 rims
- Alloy bar and stem



Frame colors: Fire Red & 2 Blue



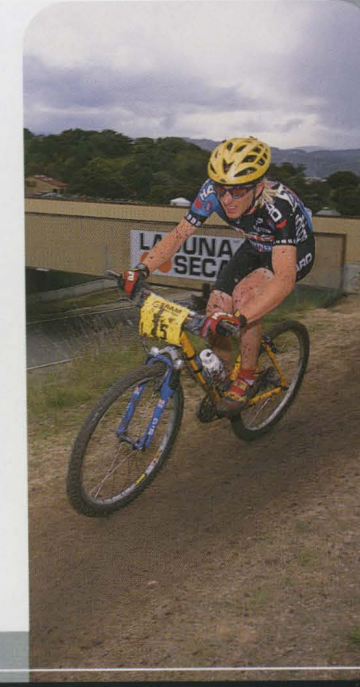
VECTOR V1

If your quest for comfort & fitness takes you off-road, the Vector V1 is worth a look. Its upright positioning, comfort features and suspension fork insure a smooth ride, wherever you go.

- Comfortable rider positioning enhances the riding experience
 - RST Suspension fork
- Wide range 21 speed gearing
- Alloy direct pull brakes



Frame colors: Ruby Red & Cayman Green Black



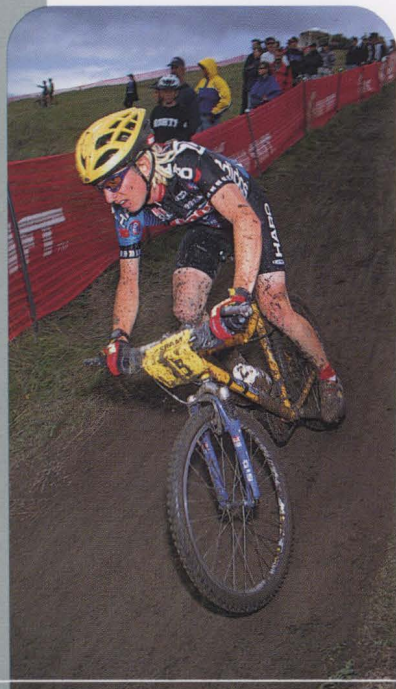
VECTOR V8



If comfort and value are your focus, the Vector V8 is the bike for you. It's V-Bar frame, high rise stem, wide comfy saddle and suspension seatpost take the pain out of staying fit.

- Comfortable position and suspension seat post
- Shimano MegaRange freewheel with Revo twist shifters
- Haro Kombi tires
- Alloy direct pull brakes

Frame colors: Ano Blue, Sea Spray & Mustard



V-BONE



Frame colors: Ruby Red & Sea Spray

Why does a 24" wheel ATB have to look like an off-the-shelf bike? Rad styling based on our popular T-Bone series with enough gears to tear up the hills.

- New burly T-Bone frame design
- Grip Shift shifters
- SR Suntour triple crankset
- Alloy direct pull brakes





	Extreme EX2	Extreme EX1	Extreme EX0	Escape A7.2	Escape A7.1
Frame	Haro LFP 7005 Alloy 4.25" Travel 7005 alloy	Haro LFP 7005 Alloy 4.25" Travel 7005 alloy	Haro LFP 7005 Alloy 4.25" Travel 7005 alloy	Haro Escape 7005 Alloy; Forged Dropout with	Haro Escape 7005 Alloy
Frame Shock	Rock Shox Deluxe	Rock Shox Deluxe	RST Coil Over	Integrated Disc Brake Mount	w/Replaceable Derailleur Hanger
Fork	Rock Shox Judy XC 100mm Travel	Manitou Magnum 3" Travel	RST 281EL 2.5" Travel	"Manitou Magnum 3" Travel	Rock Shox Jet
Headset	Dia-Compe SAS	Dia-Compe SE	Dia-Compe SE	Dia-Compe SE	Dia-Compe SE
Crankset	Shimano Deore 22-32-44	SR Suntour MD350-HP; 44-32-22; 8/9 Speed	SR Suntour CW-MD250 22-32-42	SR Suntour MD350-HP; 44-32-22; 8/9 Speed	SR Suntour MD250 22-32-42
BB Set	Shimano Cartridge	TH Cartridge	TH Cartridge	TH Cartridge	TH Cartridge
Handlebar	Haro 2014 Butted Riser Bar	Haro Alloy Butted Riser	Haro Alloy Riser	Haro Alloy Riser	Haro Alloy Riser
Stem	Haro Welded Alloy	Haro Welded Alloy	Alloy 10 Deg. w/Removable Face	Alloy 10 Deg. w/Removable Face	Alloy 10 Deg. w/Removable Face
Grip	Haro	Haro	Haro	Haro	Haro Comfort Dual Density
Hub Front	Alloy QR For Disc Brake; Sealed Bearing	Alloy QR For Disc Brake	Joy Tech QR	Joy Tech QR	Joy Tech QR
Hub Rear	Joy Tech 9 Speed Cassette; Sealed Bearing	Joy Tech 8/9-Speed Cassette QR	Joy Tech 8/9-Speed Cassette QR	Joy Tech 8/9-Speed Cassette QR	Joy Tech 8/9-Speed Cassette QR
Rim	WTB SpeedDisc 24x0 Disc Brake Specific	WTB Speedmaster w/Brushed Sidewalls	WTB Speedmaster 24x14.4	WTB Speedmaster 24x14.4	Weinmann 519
Spokes	Stainless Black	Stainless Black	Stainless	Stainless	Stainless
Tire	WTB Motoraptor w/DNA Rubber	WTB Velociraptor	WTB Velociraptor	WTB Primal Raptor	WTB Primal Raptor
Brake Front	Dia-Tech Spiral Stop Disc Brake	Dia-Tech Spiral Stop Disc Brake	Pro Max w/Linear Spring	Dia-Tech Spiral Stop Disc Brake	Pro Max w/Linear Spring
Brake Rear	Dia-Tech Spiral Stop Disc Brake	Shimano M420 V-Brake	Pro Max w/Linear Spring	Shimano M-420 V-Brake	Pro Max w/Linear Spring
Brake Lever	Dia-Tech MX-2 for Disc Brake	Dia-Tech MX-2 for Disc Brake	Pro Max	Dia-Tech MX-2 for Disc Brake	Pro Max
Derailleur Front	Shimano LX	Shimano LX	Shimano FD-MC36-E	Shimano Alivio	Shimano Acera
Derailleur Rear	Shimano LX	Shimano New Deore	Shimano Acera	Shimano Deore	Shimano Alivio
Derailleur Shifter	Shimano Deore 9-Speed	Shimano New Deore 9-Speed	Shimano Easy Fire Plus 8 Speed	Shimano Alivio Rapidfire Plus	Shimano Easy Fire Plus 8 Speed
Freewheel	Shimano Deore 11-32	Shimano Deore 11-32	SR Suntour CS-PF46-C8 11-32 8-Speed	Shimano 8-Speed 11-30 Cassette	SR Suntour CS-PF46-C8 11-32 8-Speed
Chain	Shimano 9-Speed	Shimano 9-Speed	Shimano IG-31	Shimano IG-31	Shimano IG-31
Saddle	WTB SST-X3	WTB SST-X3	WTB SST-X	WTB SST-X3	WTB SST-X
Seat Post	Haro Alloy	Haro Alloy	Alloy Micro Adjust	Haro Alloy	Alloy Micro Adjust
Seat Tube Collar/OR	Haro Race Lite Clamp	Haro Race Lite Clamp	Alloy Clamp w/Integrated Quick Release	Alloy Clamp w/Integrated Quick Release	Alloy Clamp w/Integrated Quick Release
Pedals	Wellgo Clipless	Caged Type w/Toe Clips & Straps	Caged Type w/Toe Clips & Straps	Caged Type w/Toe Clips & Straps	Caged Type w/Toe Clips & Straps
Colors	Tangerine/Black; Ruby Red/BB	Mustard/Red; Pearl Black/BB	Pearl Green/Black; Ano Blue/BB	Tangerine; Ball Burnished	Mustard; Pearl Black; Ball Burnished

Model	Size	Head Angle	Seat Angle	Top Tube Center to Center	Seat Tube Center to Center	Chainstay	BB Height	Wheel Base	Stand Over	Weight (Size 17.5)
EX2/EX1/EX0	13.5	71.3	73	20.6 522.5	13.5 343	16.7 425	11.6 295	40.0 "1,016.00"	27.1 688.3	
	15.5	70	73	21.3 542.2	15.5 394	17.1 433.5	12.6 319	42.2 "1,071.00"	29.5 749.3	EX2: 30.4
	17.5	70	73	22.3 566.7	17.5 445	17.1 433.5	12.6 319	42.6 "1,081.80"	30.0 762	EX1: 31.7
	19.5	70	73	23.4 595.2	19.3 490.3	17.1 433.5	12.6 319	43.5 "1,105.80"	31.7 805.2	EX0: 32.3
A7.2/A7.1/A7.0	13.5	71.3	73	20.6 522.5	13.5 343	16.7 425	11.6 295	40.0 "1,016.00"	27.1 688.3	A7.2: 29.1
	15.5	71.3	73	21.5 546.1	15.5 394	16.7 425	11.6 295	41.1 "1,042.90"	27.8 706.1	A7.1: 28.7
	17.5	71.3	73	22.5 571.6	17.5 445	16.7 425	11.6 295	42.0 "1,067.50"	29.5 749.3	A7.0: 28.3
	19.5	71.3	72	23.2 590.5	19.3 490.3	16.7 425	11.6 295	42.3 "1,073.30"	30.5 774.7	
	21.5	71.3	72	23.8 603.25	21.5 546	16.7 425	11.6 295	42.4 "1,077.20"	32.4 823	

All dimensions center to center



	Escape A7.0	Vector V2	Vector V1	Vector V0	Vector V-Bone
Frame	Haro Escape 7005 Alloy	Haro Vector Main Tube Crmo	Haro Vector Main Tube Crmo	Haro Vector Main Tube Crmo	Haro T-Bone Frame for 24" ATB
Fork	w/Replaceable Derailleur Hanger	w/ Machined Oversize Head Tube	w/ Machined Oversize Head Tube	w/ Machined Head Tube	Includes Top Tube Pad & Water Bottle
Fork	SR Suntour M6200	SR Suntour M6200	RST 156	Steel Rigid	Steel Rigid
Headset	YST CS-568E w/Star Nut	YST CS-568E w/Star Nut	YST CS-568E w/Star Nut	YST N663 1"	YST N663
Crankset	SR Suntour; CW-XR180-AB; 24X34X42	SR Suntour; CW-XR180-AB; 24X34X42	SR Suntour; CW-XR120-AB; 48-38-28	SR Suntour; CW-XR120-AB; 48-38-28	SR Suntour; CW-XR180-AB; 24X34X42
BB Set	TH Cartridge	TH Cartridge	TH Cup/Cone	TH Cup/Cone	TH Cup/Cone
Handlebar	Alloy Straight	Alloy Straight	Steel Rise	Steel Rise	Steel Straight
Stem	Alloy 25 Deg Clamp On	Alloy 25 Deg Clamp On	Alloy 40 Deg Clamp On	Steel 40 Deg. Rise w/Satin Finish	Steel 25 Deg. Rise
Grip	Haro Comfort Dual Density	Haro Comfort Dual Density	Haro Comfort Dual Density	Haro Comfort Dual Density	Haro
Hub Front	Joy Tech QR	Joy Tech QR	Joy Tech QR	Joy Tech Alloy QR	Joy Tech Alloy QR
Hub Rear	Joy Tech 8/9-Speed Cassette QR	Joy Tech 8/9-Speed Cassette QR	Joy Tech 7-Speed Cassette QR	Joy Tech Alloy QR	Joy Tech Alloy QR
Rim	Weinmann 519	Weinmann 519	Weinmann 519	Weinmann 519	Weinmann 519
Spokes	Stainless	Stainless	Stainless	UCP	UCP
Tire	Kenda Kobra	Kenda Kobra	Haro Kombi	Haro Kombi	Kenda
Brakes	Pro Max w/Linear Spring	Pro Max w/Linear Spring	Pro Max w/Linear Spring	Pro Max w/Linear Spring	Pro Max w/Linear Spring
Brake Lever	Pro Max	Pro Max	W/ Shifter	Pro Max	Pro Max
Derailleur Front	Shimano Acera	Shimano Acera	Shimano FD-TY32	Shimano FD-TY32	SR Suntour
Derailleur Rear	Shimano Acera	Shimano Acera	Shimano Altus	Shimano Megarange MR40	Shimano Tourney RD-TY30
Derailleur Shifter	Shimano Easy Fire Plus 8 Speed	Shimano Easy Fire Plus 8 Speed	Shimano Easy Fire Plus 7 Speed	Shimano Revo Shift	Grip Shift MRX 170 6-Speed
Freewheel	SR Suntour CS-PF46-C8 11-32 8-Speed	SR Suntour CS-PF46-C8 11-32 8-Speed	SR Suntour CS-PF302-C7 12-32 7-Speed	Shimano Megarange 14-34	Shimano Freewheel 14-28
Chain	Shimano IG-31	Shimano IG-31	KMC Z-51	KMC Z-51	KMC Z-51
Saddle	Haro Selle Comfort	Haro Selle Comfort	Haro Selle Comfort	Haro Selle Comfort	Haro Padded
Seat Post	Alloy Micro Adjust	Alloy Micro Adjust	Alloy Micro Adjust	Suspension Post	Alloy Straight
Seat Tube Collar	Alloy Clamp w/Integrated Quick Release	Alloy Quick Release	Alloy Quick Release	Alloy Quick Release	Bolt
Pedals	Haro Resin Toe Clip Compatible	Haro Resin Toe Clip Compatible	Haro Resin Toe Clip Compatible	Haro Resin Toe Clip Compatible	Haro Resin Toe Clip Compatible
Colors	Ano Blue; Mango; Ball Burnished	Fire Red; 2 Blue	Ruby Red; Cayman Green Black	Ano Blue; Sea Spray; Mustard	Ruby Red; Sea Spray

Model	Size	Head Angle	Seat Angle	Top Tube Center to Center	Seat Tube Center to Center	Chainstay	BB Height	Wheel Base	Stand Over	Weight (Size 17.5)
V2/V1/V0	13.5	71.5	73	21.1 536.6	13.5 343	16.8 425.5	11.6 294.6	40.7 "1,033.80"	26.5 673.1	
	15.5	71.5	73	21.5 546.1	15.5 394	16.8 425.5	11.6 294.6	40.8 "1,035.10"	27.8 706.1	V2: 30.1
	17.5	71.5	73	22.3 565.2	17.5 445	16.8 425.5	11.6 294.6	41.4 "1,051.60"	29.0 736.6	V1: 31.2
	19.5	71.5	73	23.0 584.2	19.3 490.3	16.8 425.5	11.6 294.6	41.9 "1,064.30"	29.9 759.5	V0: 32.1
	21.5	71.5	73	23.5 596.9	21.5 546	16.8 425.5	11.6 294.6	42.0 "1,066.80"	31.3 795	
V-Bone	11.5	70	74	19.1 486	11.3 286	15.7 400	10.6 270	38.7 984	24.5 622.3	V-Bone: 28.2

All dimensions center to center

DEL SOL SPF24



Want to hit the road with style, luxury and speed? The Del Sol SPF 24 is a sophisticated cruiser for those who appreciate traveling first class.

- Stylish comfort/cruiser Haro Del Sol cromoly frame
- Shimano RevoShift and wide-range 24 speeds
- Suspension seat post glides over potholes
- Upright stem and riser bar let you sit up and take control
- Alloy direct pull brakes provide sure stopping



Frame colors: Pearl Green & Pearl Black

DEL SOL SPF6



Frame colors: Tangerine & Ano Blue

If your interests include staying fit without staying stationary, the Del Sol SPF 6 may be for you. With its sleek styling and 6 speeds you'll find it upwardly mobile.

- Lower SPF rating allow for more casual riding
- Suspension seat post glides over speed bumps
- Super plush springer saddle might be more comfortable than your Lazy Boy
- Upright stem and riser bar let you sit up and take control



DEL SOL SPF1



If you like keeping your life simple, visualize a cruise on the Del Sol SPF 1. It's clean lines, uncluttered look and single speed gearing won't complicate your life, or your ride.

- Even more casual riding style with a single-speed
- Suspension seat post soaks up the bumps on the boardwalk
- Upright stem and riser bar let you sit up and take control
- Alloy direct pull brakes

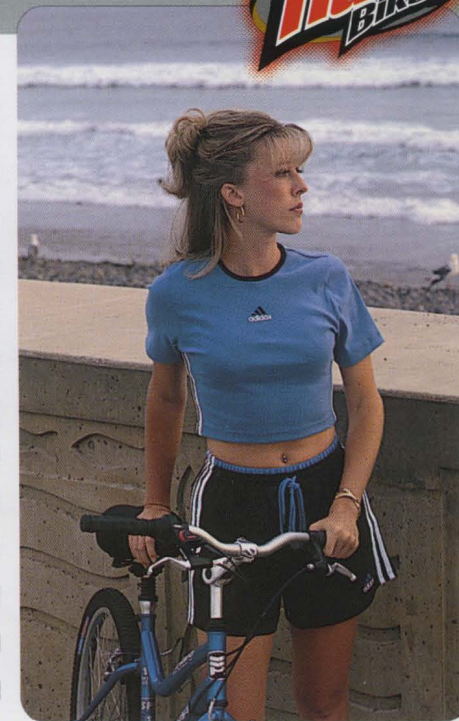
Frame colors: Ruby Red & Seaspray



	Del Sol SPF 21	Del Sol SPF 6	Del Sol SPF 1
Frame	Haro Custom Cruiser Cromoly Main Tube	Haro Custom Cruiser	Haro Custom Cruiser
Sizes	Men's: 16"; 17.5"; 19" & Deep V 16"	Men's: 16"; 17.5"; 19" & Deep V 16"	Men's: 16"; 17.5"; 19" & Deep V 16"
Colors	Pearl Black, Pearl Green	AnoBlue, Tangerine	Ruby Red, Sea Spray
Fork	Haro Oversize Unicrown R800 Cromoly	Haro Unicrown R800	Haro Unicrown R800
Headset	YST 1 1/8" Threaded	YST 1" Threaded	YST 1" Threaded
Crankset	SR Suntour CW-MD250 22/32/42	Cyclone Precision Alloy 38t w/Guard	Cyclone Precision Alloy 38t w/Guard
Bottom Bracket	TH Cartridge	Tien Hsin Cup/Cone Adjustable	Tien Hsin Cup/Cone Adjustable
Handlebar	Haro Steel 2" Riser	Haro Steel 2" Riser	Haro Steel 2" Riser
Stem	Haro Steel 40 deg. w/ Removeable Face	Haro Steel 40 deg rise	Haro Steel 40 deg rise
Grip	Haro JuJu Dual Density Gel	Haro JuJu Dual Density Gel	Haro JuJu Dual Density Gel
Hubset	Joy Tech Alloy Cassette 36 h Alloy QR	Joy Tech Alloy 36 h Alloy QR	Joy Tech Alloy Nutted Rear/QR Front
Rim	Weinmann 519	Weinmann 519	Weinmann 519
Spokes	Stainless Steel	Stainless Steel	Stainless Steel
Tires	Haro Kombi 1.95	Haro Kombi 1.95	Haro Kombi 1.95
Front Brake	Pro Max Direct Pull Canti	Pro Max Direct Pull Canti	Pro Max Direct Pull Canti
Rear Brake	Pro Max Direct Pull Canti	Pro Max Direct Pull Canti	Pro Max Direct Pull Canti
Brake Lever	Shimano Incl. W/Shifter	Pro Max Alloy	Pro Max Alloy
Front Derailleur	Shimano Acera	N/A	N/A
Rear Derailleur	Shimano Acera 8	Shimano MegaRange RD-MR40	N/A
Shifter	Shimano Easy Fire Plus	Shimano Revo Shift 6	N/A
Freewheel	SR Suntour PF45 12-32 8 Speed	Shimano MegaRange 6-Speed 14-34	Lida 18t 1/2" x 3/32" Single Speed
Chain	Shimano IG-31	KMC Z-51	KMC Z30
Saddle	Velo Dual Density Springer	Velo Dual Density Springer	Velo Dual Density Springer
Seat Post	Alloy Suspension 30mm Travel	Suspension Post 30mm Travel	Suspension Post 30mm Travel
Seat Post Clamp/QR	Haro Alloy QR	Integrated Bolt	Integrated Bolt
Pedals	Haro Resin w/Crmo Axle; Toe Clip Adaptable	Fusion DX Resin Platform	Fusion DX Resin Platform

Model	Size	Head Angle	Seat Angle	Top Tube Center to Center		Seat Tube Center to Center		Chainstay		BB Height		Wheel Base		Stand Over		Weight (Size 17.5)
SPF 24/6/1	16	71	72.5	20.9	530	16.0	406.4	16.8	425.7	11.1	281.9	40.3	"1,023.50"	27.3	693.4	
	16 Deep V	71	72.5	20.8	528.8	15.5	392.7	16.8	425.7	11.1	281.9	40.3	"1,023.60"	26.3	666.8	
	17.5	71	72.5	22.1	562.2	17.5	444.5	16.8	425.7	11.1	281.9	41.4	"1,051.20"	26.3	666.8	
	19	71	72.5	22.3	566.2	19.0	482.6	16.8	425.7	11.1	281.9	41.4	"1,051.20"	29.0	736.6	

All dimensions center to center





Authorized Dealer

• **Argentina:** Argold S.A. • **Aruba:** Radio Shack • **Australia:** Repco Cycles • **Belgium:** Louis Verwimp BV • **Canada:** Genesis Cycle • **Caribbean:** Portfolio Enterprises • **Columbia:** Trocha & Cross • **Costa Rica:** Motos Pazos S.A. • **Denmark:** Sport Bike • **Finland:** Hyper Bike • **France:** Velo 2000 • **Germany:** WTP Distribution • **Greece:** Nikos Maniatopoulos • **Guatemala:** La Cadena del Ciclista • **Israel:** Technica J. Bokstein • **Japan:** Motocross International • **Mexico:** Grupo Scandi • **Malaysia:** Gin Huat Cycle • **Netherlands:** Louis Verwimp BV • **New Caledonia:** Cycal Sarl • **New Zealand:** Roslyn Cycles • **Norway:** Norbike Engros • **Poland:** Kolarzyk • **Portugal:** Ciclo Coimbroes • **Puerto Rico:** Ciclismo • **Saipan:** Seashore Inc. • **Singapore:** Cappa Trading • **South Africa:** Pro Bike • **Spain:** Servix • **Switzerland:** N.B.C. Diffusions • **Sweden:** Carat AB • **Thailand:** Asia International • **United Kingdom:** Moore Large • **Uruguay:** Argold S.A. • **Venezuela:** Redemo Corp.