

2004 HARO BIKES



MTB



BMX



2004 HARO BMX

The only thing that matters, when you get down to it, is the ride. And that's what we're about.

We're one of the most respected names in BMX, and we earned that respect by being a rider-driven company. We were one of the first rider-owned companies, and we've never strayed far from our roots. Our product development labs are the ramps, parks and streets, the dirt jumps and race-tracks. Where you ride.

From day one, we've worked with the best riders on earth. We didn't just sponsor them. We listened to them. We built the bikes they asked for, and we made the changes they wanted. We never set out to be leaders—we just wanted to build the best-riding bikes we could. And that was enough to put us out front.

Riding has changed a lot since the '70s, when we started out. And we've kept pace, employing new technologies to keep raising the bar. We pioneered monocoque frames, split-extrusion technology, hydro-formed tubing and left-side drive. We didn't do this for the sake of driving technology—we did it to push the limits of what's rideable, because that's what our riders needed to get to the next level.

Our bikes were developed, and proven, by guys like Dave Mirra, Ryan Nyquist, Josh Harrington and Warwick Stevenson. They helped make our reputation, and keeping that rep is something we never stop working at. We know we're only as good as our last bike, and that's why we've never stopped working, why we still ride every single day.

If you do it on a BMX bike, we've got everything covered. No matter what. From vert to flatland, from racing to freestyle, we're all over it.

Whether it's on the rhythm section of your local dirt jumps, grinding down a rail at your local skate park, or in front of a crowd at the X-Games, it's all just riding. The fact that it's sweeter on a Haro is what we're proudest of.

There are tons of reasons to ride Haro. Performance. Innovation. Quality. Value. That's our rep. But we earned it because of one thing. The ride.



In celebration of our twenty fifth year, Haro is releasing a very limited edition bike, the Freestyler. Inspired by the bike that started it all, the Freestyler combines today's technology with a retro look from 'back in the day'. Only 150 will be produced and each one will be hand-signed by the 'father of freestyle' and the founder of the original rider owned company, Bob Haro.



- ▶ Limited Edition 25th Anniversary Full Crmo Frame
- ▶ FSA 1 1/8" Hiddenset Sealed
- ▶ Premium Lite Tubular Crmo 3-Piece Cranks 175mm
- ▶ Premium Products Pedals
- ▶ Haro 48 Hole Hubs w/14mm Hollow Axles; Dual 14t Freewheel Threading; Sealed Bearings
- ▶ Sun Rhino Lite Chrome 48h Rims
- ▶ Dia-Compe Tech 77 Brake Levers



AVAILABLE COLOR:

HARO freestyle

White/ Chrome



MIRRA PRO

Mirra; no other competitor has dominated the sport for as long as Dave. His X-Games medals, more than any other competitor in any sport, prove it. If you're serious about your riding, there aren't any better bikes than the ones Dave puts his name on. They come with something no other 'core' bike company can offer, a combination of Dave's input as the world's best rider and Haro's twenty five years of experience.

- ▶ Haro Mirra Pro Series Frame Full Crmo Tubing
- ▶ Premium Lite Tubular Crmo 3- Piece Cranks
- ▶ Premium Products Alloy 39t Sprocket
- ▶ Sun Rhino Lite Chrome 48h Rims
- ▶ Dia-Compe Tech 77 Brake Levers



AVAILABLE COLORS:

harobikes
mirra pro

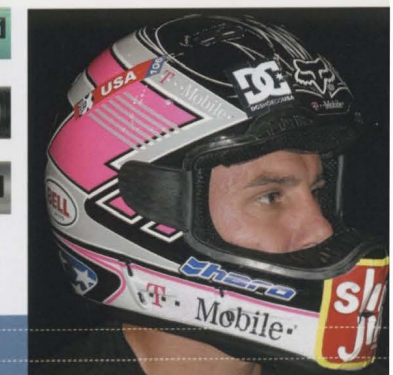
Mint

harobikes
mirra pro

SG Black

harobikes
mirra pro

Pewter



MIRRA 540

- ▶ Haro Sub-C Tubular Crmo 3-Piece Cranks 175mm
- ▶ New 7.75 Street Bar Full Crmo
- ▶ Haro 48 Hole Hubs w/14mm Hollow Axles; 14t LSD Freewheel Threading
- ▶ Alex DM-18 Doublewall 48h Rims

AVAILABLE COLORS:



Raw



Black



SG Carolina Blue



MIRRA 360

- Haro Sub-C Tubular Crmo 3-Piece Cranks 140mm ◀
- Alloy 9/16" Pedals ◀
- Haro Slim Jr. Crmo Bars ◀

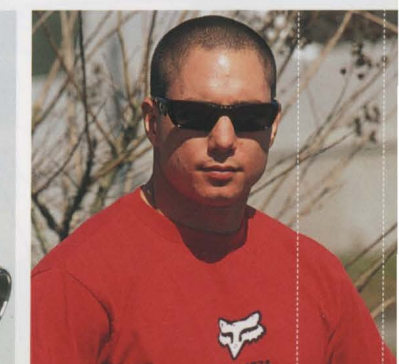
AVAILABLE COLORS:



SG Carolina Blue



Black



NYQUIST PRO

Ryan Nyquist has proven himself as the reigning King of Dirt, but his skills go way beyond dirt jumping. So we gave Ryan the chance to design his own frame that goes way beyond conventional construction methods. Ryan's frame features a new hydro-formed technology utilizing chromoly steel that enables the use of small tubes to reduce weight and larger diameter tubing at the seat tube for greater strength and torsional stiffness. It's sick.

- ▶ New Nyquist frame full crmo w/hydro-formed tube
- ▶ FSA 1 1/8" Hiddenset Sealed
- ▶ Premium Lite Tubular Crmo 3-Piece Cranks 175mm
- ▶ Premium Products Alloy 39t Sprocket
- ▶ Premium Products Pedals
- ▶ Haro 40 Hole Hubset w/14mm Hollow Axles; Dual 14t Freewheel Threading; Sealed Bearings
- ▶ One Pair Spyder Lite Pegs
- ▶ Dia-Compe Tech 77 Brake Levers



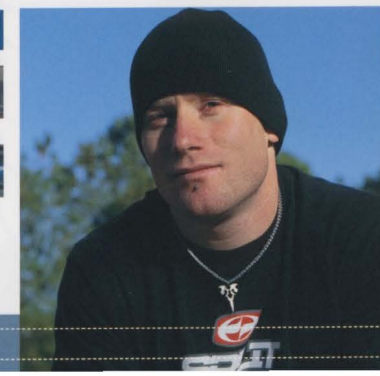
AVAILABLE COLORS:

NYQUIST PRO

Basalt

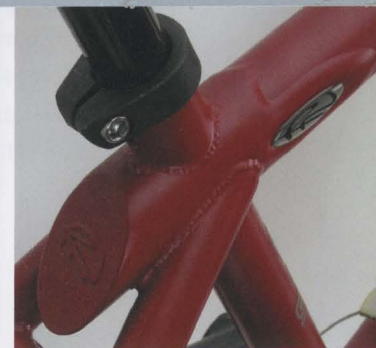
NYQUIST PRO

Midnight



NYQUIST R2

- ▶ New Nyquist frame full crmo w/hydro-formed tube
- ▶ Haro Sub-C 3-Pc. Tubular Crmo Cranks 175mm w/Euro Sealed Cartridge
- ▶ New Street 7.75 Crmo Bars
- ▶ Haro 40 Hole Hubs w/14mm Hollow Axles on Alex DM24 Double Wall Rims



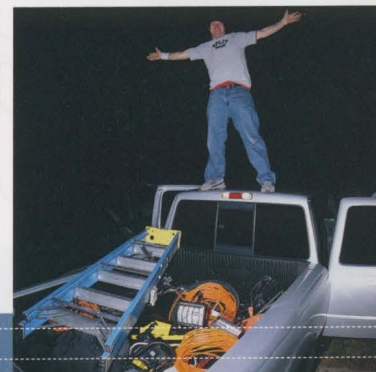
AVAILABLE COLORS:

NYQUIST R2

SG Blood Red

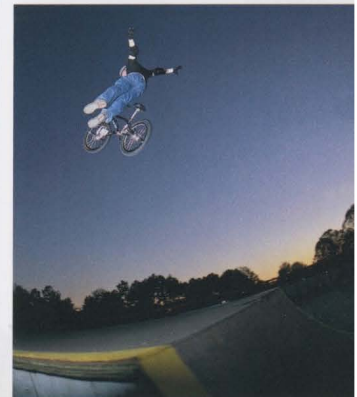
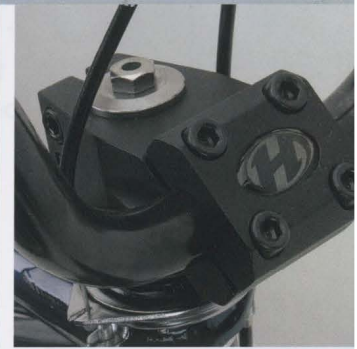
NYQUIST R2

Raw



NYQUIST R1

- ▶ New Nyquist frame 3-tubes crmo w/hydro-formed tube
- ▶ Straight Shooter Full Crmo Fork
- ▶ Haro 40 Hole Hubs w/14mm Hollow Axles on Alex MX-22 Rims
- ▶ Haro Catapult S Tires 2.25 / 2.0



AVAILABLE COLORS:

NYQUIST R1

Midnight

NYQUIST R1

SG X-Yellow

NYQUIST R1

Raw

NYQUIST R24

- ▶ New Nyquist 24" frame full crmo w/hydro-formed tube
- ▶ Haro Sub-C 3-Pc. Tubular Crmo Cranks 175mm w/Euro Sealed Cartridge
- ▶ 24" Alex DM24 Double Wall 48h Rims



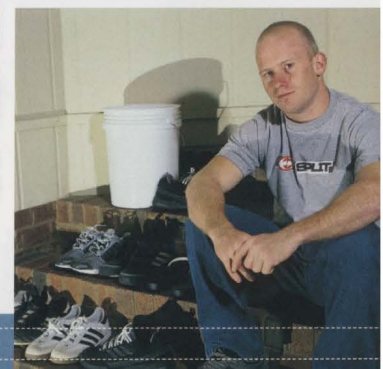
AVAILABLE COLORS:

NYQUIST R24

Midnight

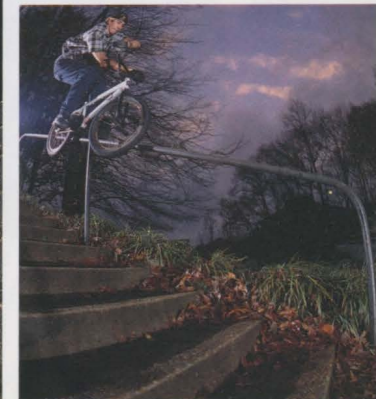
NYQUIST R24

Raw



This is where it all began with a bike called the Freestyler. No other bike has the heritage and proven performance that comes from being a direct descendent of the first freestyle bike ever developed. From basic to flatland specific bikes, the quality and value of the Freestyle series demonstrates why Haro is still 'first in freestyle' after twenty five years in the sport.

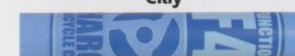
- ▶ New F-Series 3-Tube Crmo Frame
- ▶ Haro Straight Shooter Fork Full Crmo
- ▶ Haro Sub-C Tubular Crmo 3-Piece Cranks 175mm
- ▶ Haro Alloy Hubs w/ 14mm Hollow Crmo Axle



AVAILABLE COLORS:



Clay



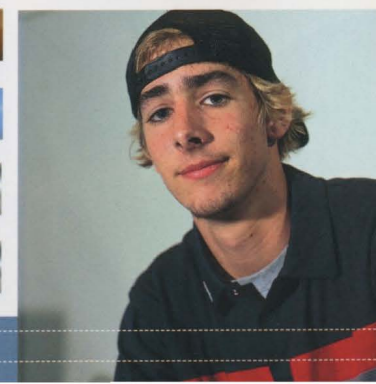
SG Carolina Blue



Pewter



Satin



- ▶ HFC Forged Crmo 3-Piece Cranks 175mm
- ▶ Fusion DX Alloy Pedals
- ▶ Tektro Alloy U-Brake w/Sticky Pads front and rear

AVAILABLE COLORS:



SG Army Green



SG Blood Red



Black



Chrome



F3 MAG

- ▶ TH Power Pro Aheadset 1 1/8"
- ▶ HFC Forged Crmo 3-Piece Cranks 175mm
- ▶ Fusion DX Alloy Pedals
- ▶ ACS Stealth 3-Spoke Mag Wheels

F3 MAG AVAILABLE COLORS:



SG Blood Red



Chrome

F2 AVAILABLE COLORS:



X-Yellow



Royal Blue



Chrome



F2

- New F-Series Jr. Sized Frame S/T Crmo ◀
- Fusion DX Alloy Pedals ◀
- Haro Landing Strip Seat ◀
- Steel Grooved Pegs ◀



- ▶ Master Full Crmo Frame
- ▶ Haro Sub-C Tubular Crmo 3-Piece Cranks 165mm
- ▶ New M Stem Forged
- ▶ Turbine Freecoaster Hub w/14mm Hollow Axle
- ▶ Sun Rhino Lite Chrome Rims 48h
- ▶ Ground Round Alloy Pegs

AVAILABLE COLORS:



SG Royal Blue



SG Gray



- ▶ Haro M-Series 3-Tube Crmo Frame
- ▶ Haro MegaCrank OPC Crmo Crank 165mm
- ▶ Haro Alloy Hubs w/14mm Hollow Crmo Axle
- ▶ Alloy Chrome Plated Rims 48h
- ▶ Ground Round Alloy Pegs

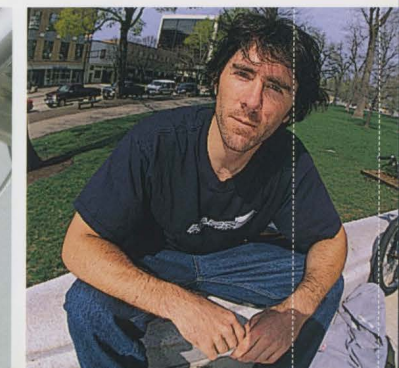
AVAILABLE COLORS:



Pewter



SG Black



BACKTRAIL X2

Although originally created as pure dirt jumpers, the Backtrail Series has been refined to provide more versatile performance both in and out of the dirt. Smaller, lighter tubes and dropouts have transformed the new Backtrails into serious street performers as well as proven dirt jumpers.

- ▶ 04 Backtrail 3 Tubes Crmo Frame
- ▶ Haro Sub-C Tubular Crmo 3-Pc Cranks 175mm
- ▶ Alloy 48h Hubs w/14mm axle
- ▶ Tektro U-Brake Rear Only



AVAILABLE COLORS:

BACKTRAIL X2

SG Putty

BACKTRAIL X2

SG Black

BACKTRAIL X2

Absolut Red

BACKTRAIL X2

Satin Chrome

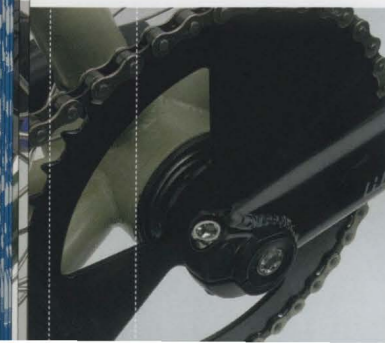
BACKTRAIL X24

AVAILABLE COLOR:

BACKTRAIL X24

SG Black

- ▶ 04 Backtrail 3 Tubes Crmo Frame
- ▶ Haro BMX Full Crmo Fork
- ▶ Haro Sub-C Tubular Crmo 3-Pc Cranks 175mm
- ▶ Haro 39t Sprocket
- ▶ ACS Main Drive 17t Freewheel



BACKTRAIL X1

- ▶ Haro Megacrank w/Fusion Sealed Mech. OPC BB
- ▶ Haro Slim Bar 2.3
- ▶ Alloy 48h Hubs w/14mm axle

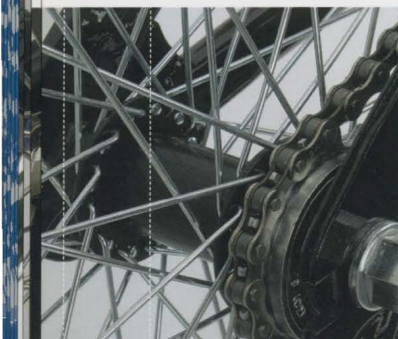
AVAILABLE COLORS:



BACKTRAIL XO

- ▶ 04 Backtrail 1 Tube Crmo Frame
- ▶ Haro Megacrank w/Fusion Sealed Mech. OPC BB
- ▶ Alloy 36h Hubs w/3/8" axle
- ▶ Tektro U-Brake Rear Only

AVAILABLE COLORS:



BACKTRAIL Z20

- ▶ New Z20" Lo-Profile 1 Tube Crmo Frame w/ 3-Pc Padset
- ▶ Haro BMX OS Threadless Fork
- ▶ Sealed Mechanism BB
- ▶ Fusion Clamp-On Stem

AVAILABLE COLORS:



Absolut Red



Candy Blue



Chrome



BACKTRAIL Z16/Z12

Z16

- New Z16" Lo-Profile Frame w/ 3-Pc Padset ◀
- Sealed Mechanism BB ◀
- Haro 16" Mini Handlebar ◀
- Steel / Coaster Brake Hubset 28h ◀
- Tektro Alloy Caliper / Coaster ◀

Z16 AVAILABLE COLORS:



Royal Blue



Chrome



Z12

- New Z12" Lo-Profile Frame w/ 3-Pc Padset ◀
- Sealed Mechanism BB ◀
- Haro 12" Mini Handlebar ◀
- Steel / Coaster Brake Hubset 16h ◀

Z12 AVAILABLE COLORS:



Absolut Red



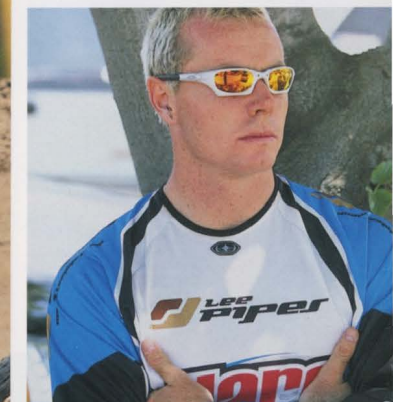
Candy Blue



SX PRO

BMX bikes have one purpose; to transfer every ounce of power in your legs to the ground. Whether you are pint-sized or full-sized like Haro's Double A pro Warwick Stevenson, there is a Group 1 for you. Our aluminum hydro-formed SX models represent the state-of-the-art in frame engineering, blending incredible torsional stiffness with light weight.

- ▶ SX Pro XL Frame with Custom Hydro-formed Top Tube
- ▶ Haro Carbon Race Fork
- ▶ Truvativ Racing XR Isis Spline w/Isis Spline Euro BB
- ▶ SDG I-Beam Saddle and Seatpost
- ▶ Haro Race Cassette Sealed Bearing Hubset 36h
- ▶ Sun Rhino Lite Rims w/Eyelets & CNC Sidewalls



AVAILABLE COLORS:



Royal Blue/ Silver



SX COMP XL

- ▶ SX Pro XL Frame with Custom Hydro-formed Top Tube
- ▶ Fusion Super DX Alloy Pedals w/Threaded Pins
- ▶ Sun Rhino Lite Rims w/CNC Sidewalls
- ▶ Haro Catapult Tires 2.1/ 1.85



AVAILABLE COLOR:



Orange/ Silver



SX COMP

- ▶ SX Comp Frame with Custom Hydro-formed Top Tube
- ▶ Haro Sub-C Tubular Crmo Cranks 180mm
- ▶ Sledgehammer 2k Crmo Bars
- ▶ Sun Rhyno Lite Rims w/CNC Sidewalls
- ▶ Haro Catapult Tires 2.1/ 1.85

AVAILABLE COLOR:



Absolut Red/ Silver



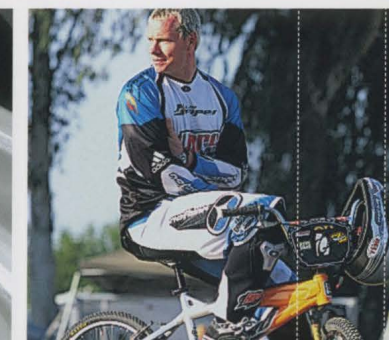
SX24

AVAILABLE COLOR:



Royal Blue/ Silver

- ▶ SX Cruiser Frame with Custom Hydro-formed Top Tube
- ▶ Haro Sub-C Tubular Crmo Cranks 180mm w/Sealed Euro BB
- ▶ Haro Small Block SL Stem
- ▶ Sun Rhyno Lite Rims w/CNC Sidewalls



SX EXPERT/SXJUNIOR

SX EXPERT

- ▶ Group 1 Expert 7005 Alloy Frame w/3-D Forged Dropouts
- ▶ Haro Crmo 1" Threadless Fork
- ▶ Haro Forged Alloy 3-Piece Cranks 170mm w/Sealed Cartridge BB
- ▶ Alex DA22 Double Wall Black Rims w/CNC Sidewalls; Flip-Flop Hubs

AVAILABLE COLORS:



Royal Blue/ Silver



SX JUNIOR

- ▶ Group 1 Junior 7005 Alloy Frame w/3-D Forged Dropouts
- ▶ Haro Crmo 1" Threadless Fork
- ▶ Haro Forged Alloy 3-Piece Cranks 165mm w/Sealed Cartridge BB
- ▶ Alex DA22 Double Wall Black Rims w/CNC Sidewalls; Flip-Flop Hubs

AVAILABLE COLORS:



Royal Blue/ Silver



SX MINI/CSX MINI

SX MINI

- Group 1 Mini 7005 Alloy Frame w/3-D Forged Dropouts ▶
- Haro Crmo 1" Threadless Fork ▶
- Haro Forged Alloy 3-Piece Cranks 155mm w/Sealed Cartridge BB ▶
- Alex DA22 Double Wall Black Rims w/CNC Sidewalls; Flip-Flop Hubs ▶

SX MINNI AVAILABLE COLORS:



Royal Blue/ Silver



CSX MINI

- Haro Group 1 Mini Full Crmo Frame ▶
- Haro Forged Alloy 3-Piece Cranks 155mm w/Sealed Cartridge BB ▶
- Tektro Mini Direct Pull Brakes ▶

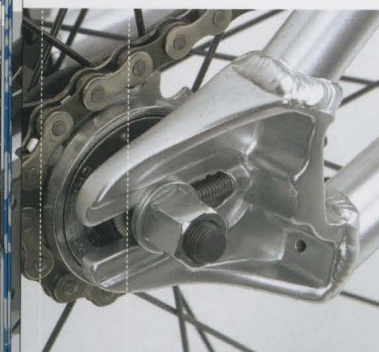
CSX MINI AVAILABLE COLORS:



Black/ Silver



Absolut Red/ Silver



2004 HARO MTB

Some people think mountain bikes are about soul, about making a connection within. Some think they're about being outdoors, getting in touch with nature. For others, a mountain bike is about escape.^{93 (1375)} They're wrong. Those are things you can do with a mountain bike. But they're not what the bikes are about.

Mountain bikes are about one thing, and one thing only—performance. You can use a mountain bike to get in touch with your soul, or get away, or even do something as practical as making a grocery run. But performance is what they're about.

Every Haro mountain bike is a performance machine, packed with all the rugged speed potential we could cram between a pair of wheels. The only thing we held back on was budget—and we trashed that on our top-of-the-heap dream machines.

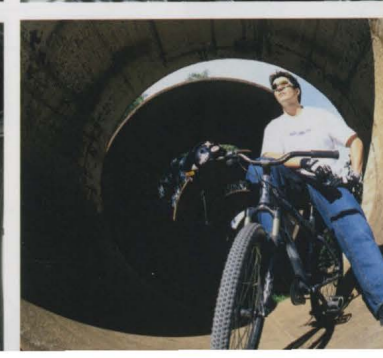
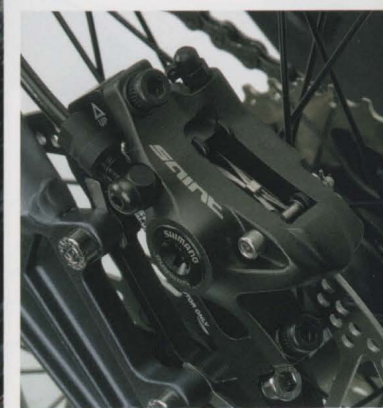
Whether you live for setting the local course record, taming that unrideable scar you call a trail or just want a tough, reliable way to get

around, there's a Haro mountain bike for you. From our no-holds-barred

Werx racers and freeride huckers to our no-nonsense V-Series hardtails, every Haro mountain bike packs a punch worthy of our aggressive BMX heritage.

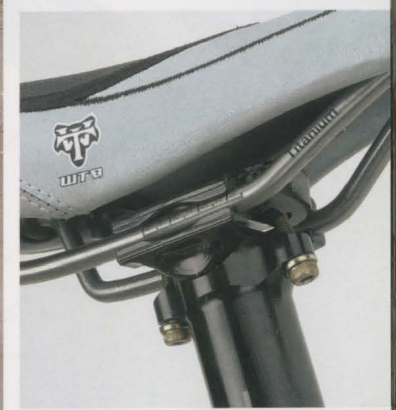
We launched Haro as a BMX company 25 years ago, banging bars and elbows in the dirt and fighting our way up to No. 1 by putting performance first. We're not like those other bike companies, who think dirt riding is a new thing. We grew up on this stuff. Dirt is our playground, and we definitely own it. It shows in every bike we build.

We're proud of our new lineup. Dollar for dollar, Haro mountain bikes give you better components and more performance. We know, because performance is what we're all about.



When speed is all that matters, you pull out all the stops. That's what we did with our Werx bikes; the sweetest rides you can get without inking a pro contract. Lightweight frames featuring our aggressive, sweet-handling geometry are paired with the best parts available, like a full Shimano XT group, or bombproof Saint freeride components. With design input and fine-tuning from our Haro/Lee Dungarees team riders, you know these bikes are good. They're not just race tested on the UCI World Cup and NORBA circuits—they're race proven, and we've got the medals to prove it.

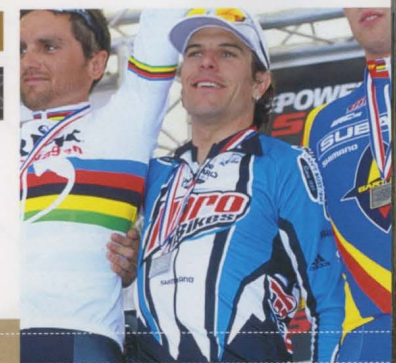
- ▶ New XLS LFP 6061 Alloy Frame w/Sealed Bearing Pivot 4" Travel
- ▶ Manitou Black Super Air SPV 100mm Travel Fork
- ▶ Manitou Swinger Air 3-Way Rear Shock
- ▶ WTB Rocket V Stealth Ti Rails
- ▶ Thomson Elite Seatpost



AVAILABLE COLOR:



Anodized Black



WERX EXT

- ▶ Hydro-formed LFP 6061 Alloy Frame w/Sealed Bearing Pivot Adjustable travel 5" or 6"
- ▶ Manitou Sherman Firefly SPV 130mm Travel Fork
- ▶ Manitou Swinger Air 4-Way Rear Shock
- ▶ Truvativ Holzfeller Bars
- ▶ SDG F.R.D. I-Beam Saddle and Seatpost



AVAILABLE COLOR:



Anodized Black



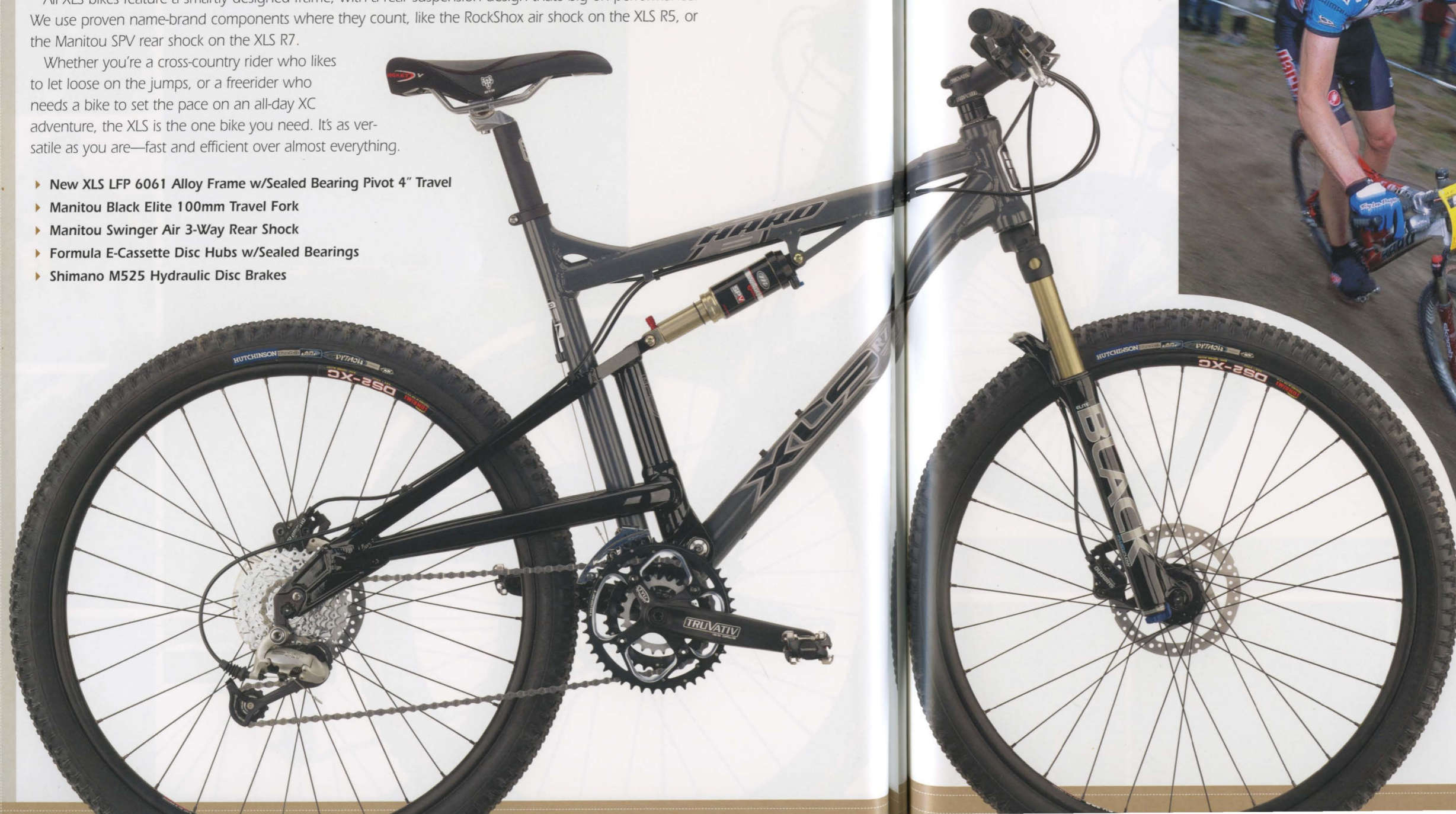
XLS R7

Our XLS series is designed to get you from point A to point B, fast—regardless of what lies in between. It's the new generation mountain bike, blurring the line between purebred cross-country and all-mountain trail machines, with 4 inches of travel front and rear.

All XLS bikes feature a smartly designed frame, with a rear suspension design that's big on performance. We use proven name-brand components where they count, like the RockShox air shock on the XLS R5, or the Manitou SPV rear shock on the XLS R7.

Whether you're a cross-country rider who likes to let loose on the jumps, or a freerider who needs a bike to set the pace on an all-day XC adventure, the XLS is the one bike you need. It's as versatile as you are—fast and efficient over almost everything.

- ▶ New XLS LFP 6061 Alloy Frame w/Sealed Bearing Pivot 4" Travel
- ▶ Manitou Black Elite 100mm Travel Fork
- ▶ Manitou Swinger Air 3-Way Rear Shock
- ▶ Formula E-Cassette Disc Hubs w/Sealed Bearings
- ▶ Shimano M525 Hydraulic Disc Brakes



AVAILABLE COLOR:



Anthracite



XLS R5

- ▶ New XLS LFP 6061 Alloy Frame w/Sealed Bearing Pivot 4" Travel
- ▶ RockShox Judy XC 100mm Travel Fork
- ▶ RockShox Bar Adjust Air Rear Shock
- ▶ Shimano Deore 9-Speed
- ▶ Hayes MX2-XC Cable Disc Brakes

AVAILABLE COLORS:



Absolut Red



XLS R3

- New XLS LFP 6061 Alloy Frame w/Sealed Bearing Pivot 4" Travel
- Manitou Six 100mm Travel Fork
- X-Fusion Coil Rear Shock w/Rebound Adjust
- Formula Disc Brake Cassette Hubs

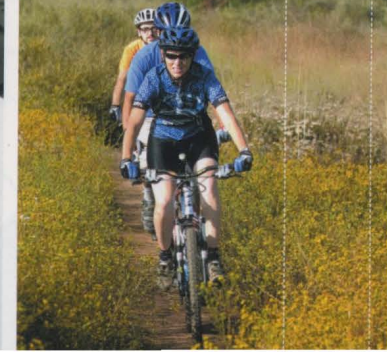
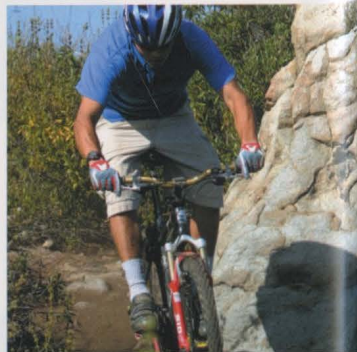
AVAILABLE COLORS:



X-Yellow



Royal Blue



EXTREME X3

If there's no such thing as too big, too steep or too fast in your world, a Haro Extreme is your bike. This year's Extreme just gets better, with a new hydro-formed top tube to support big-hit forks. Factor in 5-6 inches of adjustable travel and aggressive disc brakes, and it's easy to see why the super-stout Extreme is the ideal heavy-duty, all-mountain machine. The massively strong, low forward pivot rear suspension shrugs off big hits and hard landings to keep you in control, with plenty of lateral stiffness for precise tracking, so you'll always be riding that perfect line. If blazing downhill, huge gap jumps and big drops are what you live for, the Extremes are ready to take you there.

- ▶ Hydro-formed LFP 6061 Alloy Frame w/Sealed Bearing Pivot w/5"-6" adjustable travel
- ▶ Marzocchi Dirt Jump II 130mm Travel Fork w/ QR20
- ▶ Fox Vanilla R Rear Shock
- ▶ Haro DH Sealed Platform Pedals w/ replaceable pins
- ▶ Hayes HFX Hydraulic Brakes with 8" rotor front/6" rotor rear



AVAILABLE COLOR:



SG Black



EXTREME X2

- ▶ Hydro-formed LFP 6061 Alloy Frame w/Sealed Bearing Pivot w/5"-6" adjustable travel
- ▶ Marzocchi EXR Pro Coil 110mm Travel Fork
- ▶ Fox Vanilla R Rear Shock
- ▶ Truvativ Hussefelt Riser Bar
- ▶ Hayes MX-1 Brakes with 8" rotor front/6" rotor rear

AVAILABLE COLORS:



Silver/Absolut Red



SG Royal Blue



EXTREME X1

- ▶ Hydro-formed LFP 6061 Alloy Frame w/Sealed Bearing Pivot w/5"-6" adjustable travel
- ▶ Marzocchi MZ Comp 100mm Travel Fork
- ▶ Haro DH Platform Pedals w/ replaceable pins
- ▶ Shimano Alivio Rapid Fire

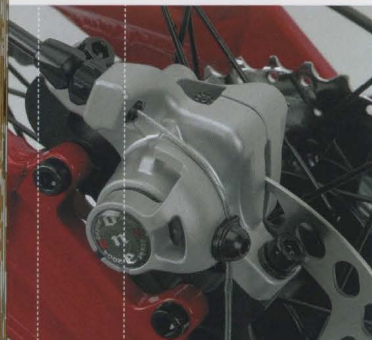
AVAILABLE COLORS:



SG Army Green



Silver/Royal Blue



ESCAPE 8.3

The Escape gives you big-hit toughness in a stripped-down, no-nonsense package. If you want big-air capability without the hassle of suspension setup, the Escape is your machine.

The Escape's frame sets the standard for lightweight, big-hit hardtails, with exclusive features like our V-gusset and hydro-formed aluminum top tube. Its 3-D formed tubing structure provides incredible torsional strength, for maximum out-of-the-saddle power and razor-sharp steering precision when banging through rock gardens.

We back the frame with powerful disc brakes, massive 2.35-inch tires and ultra-stout ISIS-splined bottom brackets for strength to match the Escape's burly chassis, and stand up to the kind of riding you live for. If riding hard is your way to relax, the Escape is your way to go.

- ▶ Escape 7005 Alloy Frame w/Hydro-formed top tube
- ▶ Marzocchi Dirt Jump II 110mm Travel Fork w/QR20
- ▶ Truvativ Hussefelt 22/32/Bashguard
- ▶ SDG F.R.D. I-Beam Saddle and Seatpost
- ▶ Hayes HFX Hydraulic Disc Brakes w/8" rotor front; 6" rotor rear



AVAILABLE COLOR:

8.3

Army Green

ESCAPE 8.2

- Escape 7005 Alloy Frame w/Hydro-formed top tube
- Marzocchi EXR Pro Coil 105mm Travel Fork
- FSA Alpha Drive 22/32/Bashguard; 44t Chainring Included
- Haro DH Platform Pedals w/ replaceable pins

AVAILABLE COLORS:



Clay



SG Black/ Anthracite



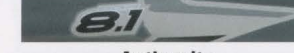
ESCAPE 8.1

- Escape 7005 Alloy Frame w/Hydro-formed top tube ◀
- Marzocchi MZ Comp 100mm Travel Fork ◀
- Kenda Blue Groove/ Nevegal 2.35 ◀

AVAILABLE COLORS:



Silver/ Royal Blue



Anthracite



The V-Series bikes give you serious performance on an entry-level budget, with value-laden components that offer the best blend of performance and durability you'll find for the dollar. Our V-Series machines use high-end performance-oriented geometry, so you get stable handling and crisp response, and a riding posture with perfect weight distribution for off-road comfort and stability.

AVAILABLE COLORS:



Pewter



Silver/ Absolut Red

New Haro V-Gusset 6061 Alloy Frame w/Disc Tabs ◀

Manitou Six 80mm Travel Fork ◀

Truvativ X-Flow 42/32/22 Crankset ◀

Alloy Stem w/ Alloy Riser Bar ◀

Shimano ST-EF35 Shifters ◀



▶ New Haro V-Gusset 6061 Alloy Frame w/Disc Tabs

▶ RST CAPA T4 76mm Travel Fork

▶ Shimano HG30 8-speed 11-30 Cassette

▶ Alex DM18 Double Wall Alloy Rims w/CNC Sidewalls

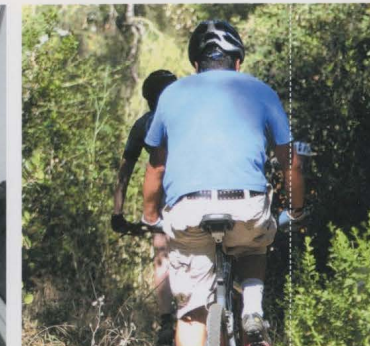
AVAILABLE COLORS:



Royal Blue



White/ Silver



- ▶ New Haro V-Gusset 6061 Alloy Frame w/Disc Tabs
- ▶ MoZo M30 63mm Fork w/Preload Adjust
- ▶ Dual Density Kraton/Gel Grips
- ▶ Stainless Steel 14g Spokes

AVAILABLE COLORS:



White/ Red



Black



Silver/ Candy Blue



V24

- ▶ New Alloy V-Gusset Frame
- ▶ SR Suntour M5000 24" Fork
- ▶ Shimano Acera Rear Derailleur
- ▶ SRAM MRX IBS 7-Speed Shifters

V24 AVAILABLE COLORS:



Silver/ Absolut Red



White/ Silver



V20

- ▶ New Alloy V-Gusset Frame
- ▶ SR Suntour M5000 20" Fork
- ▶ Shimano Altus Rear Derailleur w/Guard
- ▶ SRAM MRX 6-Speed Shifter

V20 AVAILABLE COLORS:



Silver/ Absolut Red



White/ Silver



- ▶ New 24" Extreme LFP 6061 Alloy Frame w/Sealed Bearing Pivot 3" Travel
- ▶ RST CAPA T4 50mm Travel Fork
- ▶ DNM DV-22 Rear Shock
- ▶ Truvativ X-Flow 42/32/22 160mm Crankset
- ▶ SRAM MRX 7spd

AVAILABLE COLORS:



SG Royal Blue



Silver/Absolut Red



	Werx XLS	Werx EXT	XLS R7	XLS R5	XLS R3
Frame Components					
Frame	New XLS LFP 6061 Alloy w/Sealed Bearing Pivot 4" Travel	Hydro-formed LFP 6061 Alloy w/Sealed Bearing Pivot Adjustable travel 5" or 6"	New XLS LFP 6061 Alloy w/Sealed Bearing Pivot 4" Travel	New XLS LFP 6061 Alloy w/Sealed Bearing Pivot 4" Travel	New XLS LFP 6061 Alloy w/Sealed Bearing Pivot 4" Travel
Sizes	XS, S, M, L	XS, S, M, L	XS, S, M, L	XS, S, M, L	XS, S, M, L
Rear Shock	Manitou Swinger Air 3-Way	Manitou Swinger Air 4-Way	Manitou Swinger Air 3-Way	RockShox Bar Adjust Air	X-Fusion Coil w/Rebound Adjust
Colors	Anodized Black	Anodized Black	Anthractite	Absolut Red	Royal Blue, X-Yellow
Fork	Manitou Black Super Air SPV 100mm	Manitou Sherman Firefly SPV 130mm	Manitou Black Elite 100mm	RockShox Judy XC 100mm	Manitou Six 100mm
Head Set	FSA Zero Stack ACB Bearing	FSA Zero Stack ACB Bearing	FSA Zero Stack ACB Bearing	FSA Zero Stack Semi-Cartridge	FSA Zero Stack Semi-Cartridge
Drivetrain Components					
Crank Set	Shimano XT FC-M760 22/32/44	Shimano Saint FC-M800 22/32/Bashguard	Truvativ Stylo Team 22/32/44	Truvativ Firex 22/32/44	Truvativ FiveD 22/32/42
Bottom Bracket	Included w/Crankset	Included w/Crankset	Truvativ Gigapipe SL Isis Cartridge	Truvativ Gigapipe SL Isis Cartridge	Truvativ Cartridge
Derailleur Front	Shimano XT FD-M760	Shimano Deore	Shimano Deore	Shimano Deore	Shimano Alivio
Derailleur Back	Shimano XT RD-M760	Shimano Saint RD-M800	Shimano XT	Shimano LX	Shimano Deore
Freewheel	Shimano XT CS-M760 11-34	Shimano HG-50 11-34	SRAM PG-950 11-34	SRAM PG-950 11-34	Shimano 11-32
Chain	Shimano HG73	Shimano HG53	Shimano CN-HG73	Shimano CN-HG53	Shimano IG51
Pedals	Shimano SPD-M540	Haro DH Platform Sealed w/ replaceable pins	Shimano SPD-M520	Alloy Cage w/Toe Clip & Strap	Alloy Cage w/Toe Clip & Strap
Control Center Components					
Handlebar	Truvativ Team Riser 680 x 25 Rise	Truvativ Holzfeller 710 x 50 Rise; OS	Truvativ XC-XR AL66 680 x 25 rise	Truvativ AL 6061 640 x 25 rise	Truvativ Alloy Riser 640 x 45 rise
Stem	Truvativ Team	Truvativ Holzfeller Oversize 31.8	Truvativ XC-XR	Haro Welded Alloy	Haro Welded Alloy
Grips	WTB Dual Compound Trail	Haro Tread Dual Density	WTB Dual Compound Trail	WTB Dual Compound Trail	WTB Dual Compound Trail
Derailleur Shifter	Shimano XT ST-M765 for Disc Brake	Shimano XT ST-M765 for Disc Brake	Shimano Deore LX 9-Speed	Shimano Deore 9-Speed	Shimano ST-EF35 8-Speed
Saddle	WTB Rocket V Stealth Ti Rails	SDG F.R.D. I-Beam	WTB Rocket V Stealth Crmo Rails	WTB Rocket V Race	Haro Selle Sport SL Dual Density
Seat Post	Thomson Elite 30.9	SDG F.R.D. I-Beam 30.9	Haro Alloy 30.9	Haro Alloy 30.9	Haro Alloy 30.9
Seat Post Clamp	Haro Race Lite 34.9	Haro Alloy QR	Haro Race Lite 34.9	Haro Race Lite 34.9	Haro Alloy QR
Wheelset Components					
Hubset	Shimano XT M765 for Center Lock Disc	Shimano Saint M800 20mm Thru Axle Front / 12mm Axle Rear	Formula E-Cassette Disc 32h Sealed Bearing	Formula Disc Brake Cassette 32h	Formula Disc Brake Cassette 32h
Rim	Sun DS1-XC Welded Joint 32h	Sun Doubletrack Welded Joint 32h	Sun DS2-XC Disc 32h	Alex DH19 Double Wall w/Eyelets 32h	Alex DH19 Doublewall 32h
Spokes	DT Competition 14/15/14g	DT Competition 14g	Black Stainless Steel 14g D/B w/Alloy Nipples	Black Stainless Steel 14g	Black Stainless Steel 14g
Tires	Hutchinson Python 2.0 Airlight Folding Bead	Maxxis Minion DH 2.35	Hutchinson Python 2.0 Airlight Folding Bead	Kenda Karma 2.0	Kenda Karma 2.0
Brake Components					
Brake Set	Shimano XT M765 Hydraulic	Shimano Saint M800 Hydraulic	Shimano M525 Hydraulic Disc	Hayes MX2-XC Cable Disc Brake	Tektro Forged Linear Pull
Brake Lever	Shimano XT Hydraulic	Shimano XT Hydraulic	Shimano M525 Hydraulic	Tektro e-clip bushing	Tektro e-clip bushing



XLS Series, Werx & XCR Geometry

	Size	Head Angle	Seat Angle	Top Tube (Effective)	Seat Tube (C-T)	Chainstay	BB Height	Wheel Base	Stand Over	Weight
XLS R7, R5, R3 & Werx XLS	XS	70	73	21.66 550.5	15.5 393.7	16.9 430	12.7 322	41.2 1046.8		XLS R3 - 28.6
XLS R7, R5, R3 & Werx XLS	Sm	70	73	22.85 580.5	17.5 444.5	16.9 430	12.7 322	42.0 1067.8	30.0 762	XLS R5 - 30.9
XLS R7, R5, R3 & Werx XLS	Med	70	73	23.65 600.8	19.5 495.3	16.9 430	12.7 322	42.8 1088.0	30.0 762	XLS R7 - 28.4
XLS R7, R5, R3 & Werx XLS	Lg	70	73	24.5 622.1	21.5 546.1	16.9 430	12.7 322	43.7 1109.8	31.7 805.2	Werx XLS - 27.3
XCR Frame	XS	71	73.5	21.8 553.3	15.5 393.7	16.3 415	12.0 304.6	40.3 1023.8		
XCR Frame	Sm	71	73.5	23.1 586.6	17.5 444.5	16.3 415	12.0 304.6	41.6 1056.7		
XCR Frame	Med	71.5	73.5	24.1 611.9	19.5 495.3	16.3 415	12.0 304.6	42.4 1077.6		
XCR Frame	Lg	71.5	73	24.5 621.8	21.5 546.1	16.3 415	12.0 304.6	42.6 1082.8		

Specifications subject to change without notice. XLS frames measured with approximate 100mm travel fork. XCR frames measured with approximate 80mm travel fork. CPSC equipment included with each bike but not shown.

MTB SPECS

	Extreme X3	Extreme X2	Extreme X1	Extreme X24	Escape 8.3	Escape 8.2	Escape 8.1
Frame Components							
Frame	Hydro-formed LFP 6061 Alloy w/Sealed Bearing Pivot Adjustable travel 5" or 6"	Hydro-formed LFP 6061 Alloy w/Sealed Bearing Pivot Adjustable travel 5" or 6"	Hydro-formed LFP 6061 Alloy w/Sealed Bearing Pivot Adjustable travel 5" or 6"	New 24" Extreme LFP 6061 Alloy w/Sealed Bearing Pivot 3 1/2" Travel	Escape 7005 Alloy Frame w/Hydro-formed t/t	Escape 7005 Alloy Frame w/Hydro-formed t/t	Escape 7005 Alloy Frame w/Hydro-formed t/t
Sizes	XS, S, M, L	XS, S, M, L	XS, S, M, L	XS	XS, S, M, L	XS, S, M, L	XS, S, M, L
Rear Shock	Fox Vanilla R	Fox Vanilla R	X-Fusion w/Rebound Adjustable	DNM DV-22	N/A	N/A	N/A
Colors	SG Black	SG Royal Blue; Silver/Absolut Red	SG Army Green; Silver/Royal Blue	SG Royal Blue; Silver/Absolut Red	Army Green	SG Black/ Anthracite, Clay	Silver/ Royal Blue, Anthracite
Fork	Marzocchi Dirt Jump II 130mm Travel w/ QR20	Marzocchi EXR Pro Coil 120mm Travel	Marzocchi MZ Comp 100mm travel	RST CAPA T4 50mm Travel	Marzocchi Dirt Jump II 110mm Travel w/QR20	Marzocchi EXR Pro Coil 105mm Travel	Marzocchi MZ Comp 100mm Travel
Head Set	Sealed Cartridge Bearing Zero Stack Threadless	Zero Stack Threadless	Zero Stack Threadless	TH Power Pro Aheadset 1 1/8"	Sealed Cartridge Bearing Zero Stack Threadless	Zero Stack Threadless	Zero Stack Threadless
Drivetrain Components							
Crank Set	Truvativ Hussefelt 22/32/Bashguard	FSA Alpha Drive 44t Included	FSA Alpha Drive 44/32/22	Truvativ X-Flow 42/32/22 160mm	Truvativ Hussefelt 22/32/Bashguard Truvativ Gigapipe Team	FSA Alpha Drive 22/32/Bashguard; 44t Included	FSA Alpha Drive 22/32/42
Bottom Bracket	Truvativ Gigapipe Team DH Isis Cartridge	FSA ISIS Cartridge	FSA ISIS Cartridge	Truvativ Cartridge	DH ISIS Cartridge	FSA ISIS Cartridge	FSA ISIS Cartridge
Derailier Front	Shimano Deore	Shimano Deore	Shimano Alivio	Shimano C-201	Shimano Deore	Shimano Alivio	Shimano Alivio
Derailier Back	Shimano XT	Shimano LX	Shimano Deore	Shimano Acera	Shimano XT	Shimano LX	Shimano Deore
Freewheel	SRAM PG-950 11-34	SRAM PG-950 11-34	Shimano 11-32	Sunrace 11-30	SRAM PG-950 11-34	SRAM PG-950 11-34	Shimano 11-32
Chain	Shimano CN-HG53	Shimano CN-HG53	Shimano IG51	Shimano HG50	Shimano CN-HG53	Shimano CN-HG53	Shimano IG51
Pedals	Haro DH Platform Sealed w/ replaceable pins	Haro DH Platform w/ replaceable pins	Haro DH Platform w/ replaceable pins	Fusion DX Alloy	Haro DH Platform Sealed w/ replaceable pins	Haro DH Platform w/ replaceable pins	Haro DH Platform w/ replaceable pins
Control Center Components							
Handlebar	Truvativ Hussefelt Riser 680 x 50 rise	Truvativ Hussefelt Riser 680 x 50 rise	Truvativ Alloy Riser 640 x 45 rise	Haro Steel Riser	Truvativ Hussefelt Riser 680 x 50 rise	Truvativ Hussefelt Riser 640 x 45 rise	Truvativ Alloy Riser 640 x 45 rise
Stem	Truvativ Hussefelt	Haro Welded Alloy 31.8 OS Clamp-On	Haro Welded Alloy Clamp-On	Haro Welded Alloy Clamp-On	Truvativ Hussefelt	Haro Welded Alloy 31.8 Oversized Clamp-On	Haro Welded Alloy Clamp-On
Grips	Haro Tread Dual Density	Haro Tread Dual Density	Haro Tread Dual Density	Haro Tread Dual Density	Haro Tread Dual Density	Haro Tread Dual Density	Haro Tread Dual Density
Derailier Shifter	Shimano Deore LX 9-Speed	Shimano Deore 9-Speed	Shimano Alivio Rapid Fire + 8-Speed	SRAM MRX 7spd	Shimano Deore 9-Speed	Shimano Deore 9-Speed	Shimano Alivio Rapid Fire + 8-Speed
Saddle	SDG FR.D. I-Beam	Haro Freeride Cromo Rails	Haro Freeride	Haro Selle Sport Dual Density	SDG FR.D. I-Beam	Haro Freeride Crmo Rails	Haro Freeride
Seat Post	SDG I-Beam 30.9mm	Haro Alloy Micro Adjust 30.9mm	Haro Alloy Micro Adjust 30.9mm	Haro Alloy Micro Adjust 27.2mm	SDG I-Beam 30.9mm	Haro Alloy Micro Adjust 30.9mm	Haro Alloy Micro Adjust 30.9mm
Seat Post Clamp	Alloy Collar w/QR	Alloy Collar w/QR	Alloy Collar w/QR	Alloy Collar w/QR	Alloy Collar w/QR	Alloy Collar w/QR	Alloy Collar w/QR
Wheelset Components							
Hubset	Formula 20mm Thru Axle Disc Ft Cassette Disc Rr; Sealed Bearing 32h	Formula Disc Brake Cassette 32h	Formula Disc Brake Cassette 32h	Formula 7spd Cassette	Formula 20mm Thru Axle Disc Ft Cassette Disc Rr; Sealed Bearing 32h	Formula Disc Brake Cassette 32h	Formula Disc Brake Cassette 32h
Rim	Sun Single Track SL1	Sun Hill Rod	Alex DM18 Double Wall 32h	Alex DM18 Double Wall 32h	Sun Single Track SL1 32h	Sun Hill Rod 32h	Alex DM18 Double Wall 32h
Spokes	Black Stainless Steel 14g	Black Stainless Steel 14g	Black Stainless Steel 14g	Black Stainless Steel 14g	Black Stainless Steel 14g	Black Stainless Steel 14g	Black Stainless Steel 14g
Tires	Maxxis Minion DH 2.5	Kenda Blue Groove/ Nevegal 2.35	Kenda Blue Groove/ Nevegal 2.35	Kenda Kenetics 2.1 x 24	Maxxis Minion DH 2.5	Kenda Blue Groove/ Nevegal 2.35	Kenda Blue Groove/ Nevegal 2.35
Brake Components							
Brake Set	Hayes HFX Hydraulic 8" rotor front/6" rotor rear	Hayes MX-1 8" rotor front/6" rotor rear	Hayes MX-2 6" rotor	Tektro V-Brakes	Hayes HFX Hydraulic 8" rotor front; 6" rotor rear	Hayes MX-1 8" rotor front; 6" rotor rear	Hayes MX-2 6" rotor
Brake Lever	Hayes	Tektro e-clip bushing	Tektro e-clip bushing	SRAM MRX	Hayes	Tektro e-clip bushing	Tektro e-clip bushing

Extreme / Werx EXT Geometry										
	Size	Head Angle	Seat Angle	Top Tube (Effective)	Seat Tube (C-T)	Chainstay	BB Height	Wheel Base	Stand Over	Weight
Extreme all models & EXT	XS	68.5	72.5	21.8	554.7	15.5	393.7	17.0	430.7	13.2 335
Extreme all models & EXT	Sm	69.5	72.5	23.0	585.3	17.5	444.5	17.0	430.7	13.2 335
Extreme all models & EXT	Med	69.5	72.5	23.9	606.5	19.5	495.3	17.0	430.7	13.2 335
Extreme all models & EXT	Lg	69.5	72.5	24.7	626.7	21.5	546.1	17.0	430.7	13.2 335
Escape Geometry										
Escape all models	XS	69	71	21.3	540.9	15.5	393.7	16.7	425	12.6 320
Escape all models	Sm	69	71	22.4	570.2	17.5	444.5	16.7	425	12.6 320
Escape all models	Med	69	71	23.4	595.6	19.5	495.3	16.7	425	12.6 320
Escape all models	Lg	69	71	24.4	619.3	21.5	546.1	16.7	425	12.6 320

Specifications subject to change without notice. Escape frames measured with 100mm travel fork. Extreme frames measured with 120mm travel fork. CPSC equipment included with each bike but not shown.

MTB SPECS

	V3	V2	V1	V24	V20
Frame Components					
Frame	New Haro V-Gusset 6061 Alloy w/Disc Tabs	New Haro V-Gusset 6061 Alloy w/Disc Tabs	New Haro V-Gusset 6061 Alloy w/Disc Tabs	New Alloy V-Gusset	New Alloy V-Gusset
Sizes	XS, S, M, L, XL	XS, S, M, L, XL	XS, S, M, L, XL	13.5" C-T	11" C-T
Frame Shock	N/A	N/A	N/A	N/A	N/A
Colors	Silver/ Absolut Red, Pewter	White/ Silver, Royal Blue	Silver/ Candy Blue, Black, White/ Red	Silver/ Absolut Red, White/ Silver	Silver/ Absolut Red, White/ Silver
Fork	Manitou Six 80mm Travel	RST CAPA T4 76mm Travel	MoZo M30 63mm w/Preload Adjust	SR Suntour M5000 24"	SR Suntour M5000 20"
Head Set	Aheadset 1 1/8"	Aheadset 1 1/8"	Aheadset 1 1/8"	Aheadset 1 1/8"	Aheadset 1 1/8"
Drivetrain Components					
Crank Set	Truvativ X-Flow 42/32/22	SR Suntour XCC-150 42/34/24	SR Suntour XCC-150 42/34/24	SR Suntour XCC-150 42/34/24 160mm	Alloy 40t w/Guard
Bottom Bracket	Truvativ Cartridge	TH Cartridge	TH Cartridge	TH Cartridge	TH Cartridge
Derailier Front	Shimano C-050	Shimano C-050	Shimano FD-TY10	Shimano FD-TY10	N/A
Derailier Back	Shimano Deore M510	Shimano Alivio	Shimano Acera	Shimano Acera	Shimano Altus w/Guard
Freewheel	SRAM PG-830 11-32	Shimano HG30 8-speed 11-30	Shimano 7-Speed Freewheel 14-28	Shimano 7-Speed Freewheel 14-28	Shimano 6-Speed Freewheel 14-28
Chain	Shimano IG-31	Shimano IG-31	Shimano HG-50	Shimano HG-50	Shimano HG-50
Pedals	Alloy Caged w/Toe Clip/Strap	Alloy Caged	Alloy Caged	Alloy Caged	Alloy Caged
Control Center Components					
Handlebar	Alloy 30mm Riser ATB	Alloy 30mm Riser ATB	30mm Riser ATB	30mm Riser ATB	30mm Riser ATB
Stem	Alloy Clamp-On 10 deg. W/Removable Face	Alloy Clamp-On 10 deg. W/Removable Face	Alloy Clamp-On 10 deg. W/Removable Face	Alloy Clamp-On 25 deg. W/Removable Face	Alloy Clamp-On 25 deg. W/Removable Face
Grips	Dual Density Kraton/Gel	Dual Density Kraton/Gel	Dual Density Kraton/Gel	Dual Density Kraton/Gel	Dual Density Kraton/Gel
Derailier Shifter	Shimano ST-EF35	Shimano ST-EF29	Shimano ST-EF28	SRAM MRX IBS 7-Speed	SRAM MRX 6-Speed
Saddle	Haro Selle Sport Dual Density	Haro Selle Sport Dual Density	Haro Selle Sport Dual Density	Haro Selle Sport Jr. Dual Density	Haro Selle Sport Jr. Dual Density
Seat Post	Alloy Micro Adjust 27.2mm	Alloy Micro Adjust 27.2mm	Alloy Micro Adjust 27.2mm	Alloy Micro Adjust 27.2mm	Alloy Micro Adjust 27.2mm
Seat Post Clamp	Alloy Collar w/QR	Alloy Collar w/QR	Alloy Collar w/QR	Alloy QR	Alloy QR
Wheelset Components					
Hubset	Formula 8-Speed Cassette QR 32h	Formula 8-Speed Cassette QR 32h	Formula 7-Speed Freewheel QR 36h	Alloy QR Front & Rear 32h	Alloy QR Front/Nutted Rear 32h
Rim	Alex DM18 Double Wall Alloy w/CNC Side	Alex DM18 Double Wall Alloy w/CNC Side	Alloy 36h w/ brushed sidewall	Alloy 32h 24"	Alloy 32h 20"
Spokes	Stainless Steel 14g	Stainless Steel 14g	Stainless Steel 14g	Stainless Steel 14g	Stainless Steel 14g
Tires	Kenda Klaw 2.1	Kenda Klaw 2.1	Kenda Klaw 2.1	Kenda K-B49 1.95"	Haro Holeshot 2.25"
Brake Components					
Brake Set	Tektro Alloy Linear Spring	Tektro Alloy Linear Spring	Tektro Alloy Linear Spring	Tektro Alloy Linear Spring	Tektro Alloy Linear Spring
Brake Lever	Shimano	Shimano	Shimano	SRAM Reach Adjust	Tektro Reach Adjust

V-Series Geometry										
	Size	Head Angle	Seat Angle	Top Tube (Effective)	Seat Tube (C-T)	Chainstay	BB Height	Wheel Base	Stand Over	Weight
V1/V2/V3	XS	71	73	21.4	543	15.5	393.7	16.7	425	11.7 298
V1/V2/V3	Sm	71	73	22.5	570.7	17.5	444.5	16.7	425	11.7 298
V1/V2/V3	Med	71	73	23.4	594.1	19.5	495.3	16.7	425	11.7 298
V1/V2/V3	Lg	71	72	24.3	616.5	21.5	546.1	16.7	425	11.7 298
V1/V2/V3	XL	71	72	24.6	624.4	23.5	596.9	16.7	425	11.7 298
V-24	11.5	71	74	20.3	514.8	13.5	343	16.7	425	10.6 270
V-20	9	70	71	18.9	479.1	11.0	279.4	14.3	363	9.8 250

Specifications subject to change without notice. V Series Frames measured with 75mm travel fork. CPSC equipment included with each bike but not shown.

	Freestyler	Mirra Pro	Mirra 540	Mirra 360	Nyquist Pro	Nyquist R2	Nyquist R1	Nyquist R24
Frame Components								
Frame	Limited Edition 25th Anniversary Full Crmo Frame White/CP	Haro Mirra Pro Series Full Crmo Tubing	Haro Mirra Pro Series 3-Tube Crmo	Mirra 16" Frame 3-Tube Crmo	New Nyquist frame full crmo w/hydro-formed tube	New Nyquist frame full crmo w/hydro-formed tube	New Nyquist frame 3-tubes crmo w/hydro-formed tube	New Nyquist 24" frame full crmo w/hydro-formed tube
Colors	White/CP	SG Black, Pewter, Mint	SG Black, Pewter, Mint	SG Carolina Blue, Black, Raw	Basalt, Midnight	Raw, SG Blood Red	Raw, SG X-Yellow, Midnight	Raw, Midnight
Fork	Haro Straight Shooter Full Crmo w/Integrated Preload Bolt	Haro Straight Shooter Full Crmo	Haro Straight Shooter Crmo Steerer	Straight Shooter 16 Full Crmo	Straight Shooter Full Crmo	Straight Shooter Full Crmo	Straight Shooter Full Crmo	Straight Shooter 24" Full Crmo
Head Set	FSA 1 1/8" Hiddenset Sealed	FSA 1 1/8" Hiddenset Sealed	TH Power Pro Aheadset 1 1/8"	TH Power Pro Aheadset 1 1/8"	FSA 1 1/8" Hiddenset Sealed	Power Pro Aheadset 1 1/8"	Power Pro Aheadset 1 1/8"	Power Pro Aheadset 1 1/8"
Rotor	SST Oryg	SST Oryg	SST Oryg	N/A	SST Oryg	SST Oryg	SST Oryg	SST Oryg
Drivetrain Components								
Crank Set	Premium Lite Tubular Crmo 3-Piece 175mm	Premium Lite Tubular Crmo 3-Piece 175mm	Haro Sub-C Tubular Crmo 3-Piece 175mm	Haro Sub-C Tubular Crmo 3-Piece 140mm	Premium Lite Tubular Crmo 3-Piece 175mm	Haro Sub-C 3-Pc. Tubular Crmo 175mm	Haro Sub-C 3-Pc. Tubular Crmo 175mm	Haro Sub-C 3-Pc. Tubular Crmo 175mm
BB Set	Euro Sealed Cartridge	Euro Sealed Cartridge	Sealed Cartridge	Sealed Cartridge	Euro Sealed Cartridge	Euro Sealed Cartridge	BMX Sealed Cartridge	Euro Sealed Cartridge
Sprocket	Premium Products Alloy 39t	Premium Products Alloy 39t	Haro 39t	Haro 36t	Premium Products Alloy 39t	Haro Alloy 39t	Haro 39t	Haro Alloy 39t
Freewheel	ACS Crmo Fat 14t	ACS Crmo Southpaw 14t	ACS Crmo Southpaw 14t	ACS Main Drive 16t	ACS Fat 14t Crmo	ACS Fat 14t Crmo	ACS Fat 14 Crmo	ACS Fat 16t Crmo
Chain	KMC Z710	KMC Z710	KMC Z410	KMC Z410	KMC Z710HX	KMC Z410	KMC Z410	KMC Z410
Pedals	Premium Products	Premium Products	Fusion DX Alloy	Alloy 9/16"	Premium Products	Small Block Alloy	Fusion DX Alloy	Small Block Alloy
Control Center Components								
Handlebar	New 7.75 Street Bar Full Crmo	New 7.75 Street Bar Full Crmo	New 7.75 Street Bar Full Crmo	Haro Slim Jr. Bars, Crmo	New Street 7.75 Crmo Bars	New Street 7.75 Crmo Bars	New Street 7.75 Crmo Bars	Sledgehammer 2k Cruiser
Stem	Haro Small Block SL	Haro Small Block SL	Haro Small Block SL	Fusion Clamp-On	Haro Small Block SL	Haro Small Block SL	Haro Small Block SL	Haro Small Block SL
Grip	Haro Core Grip	Haro Core Grip	Haro Core Grip	Haro Hevron Grip	Haro Tread	Haro Tread	Haro Tread	Haro Tread
Saddle	Freestyler Landing Strip	Mirra Landing Strip	Mirra Landing Strip	Haro Shorty Padded	Haro Landing Strip	Haro Landing Strip	Haro Landing Strip	Haro Landing Strip
Seat Post	Twin Torque Crmo Micro Adj 25.4mm	Twin Torque Crmo Micro Adj 25.4mm	Twin Torque Micro Adj 25.4mm	Alloy Micro Adjust 25.4	Haro Twin Torque Crmo Micro Adj 25.4mm	Haro Twin Torque Crmo Micro Adj 25.4mm	Haro Twin Torque Crmo Micro Adj 25.4mm	Haro Twin Torque Crmo Micro Adj 25.4mm
Seat Clamp	Haro SOHC	Haro SOHC	Haro SOHC	Haro SOHC	Haro SOHC	Haro SOHC	Haro SOHC	Haro SOHC
Wheelset Components								
Hubset	Haro 48 Hole; 14mm Hollow Axles; Dual 14t Freewheel Threading; Sealed Bearings	Haro 48 Hole; 14mm Hollow Axles; Dual 14t Freewheel Threading; Sealed Bearings	Haro 48 Hole; 14mm Hollow Axles; 14t LSD Freewheel Threading	Alloy 3/8" Axle	Haro 40 Hole; 14mm Hollow Axles; 14t Freewheel Threading; Sealed Bearings	Haro 40 Hole; 14mm Hollow Axles; 14t Freewheel Threading	Haro 40 Hole; 14mm Hollow Axles; 14t Freewheel Threading	Alloy 14mm Crmo Axle48h
Rim	Sun Rhino Lite Chrome 48h	Sun Rhino Lite Chrome 48h	Alex DM-18 Doublewall 48h	Alloy 36h	Alex DM24 Double Wall 40h	Alex DM24 Double Wall 40h	Alex MX-22 40h	24" Alex DM24 Double Wall 48h
Spokes	14g Stainless	14g Stainless	14g	14g	14g Stainless	14g	14g	14g Stainless
Tire	Haro MS 4 2.0	Haro MS 4 2.0	Haro MS 4 2.0	Haro Rap 16 x 1.95	Haro Catapult S 2.25 / 2.0	Haro Catapult S 2.25 / 2.0	Haro Catapult S 2.25 / 2.0	Kenda K-Rad 24x 1.95
Pegs / Misc	Haro Spyder Pegs	Haro Spyder Pegs	Haro Spyder Pegs	Steel Pegs; 1 Pair	One Pair Spyder Lite Pegs	One Pair Spyder Pegs	One Pair Spyder Pegs	N/A
Brake Components								
Brake Set	Dia-Tech AD-996 w/Hombre Pads F & R	Dia-Tech AD-996 w/Hombre Pads F & R	Tektro Alloy U-Brake w/Sticky Pads F & R	Tektro Alloy U-Brake w/Sticky Pads F & R	Dia-Tech AD-990 Rear Only	Tektro Alloy U-Brake w/Sticky Pads Rear Only	Tektro Alloy U-Brake w/Sticky Pads Rear Only	Tektro Alloy U-Brake w/Sticky Pads Rear Only
Brake Lever	Dia-Compe Tech 77	Dia-Compe Tech 77	Tektro Alloy w/Reach Adjust	Tektro Alloy w/Reach Adjust	Dia-Compe Tech 77	Tektro Alloy w/Reach Adjust	Tektro Alloy w/Reach Adjust	Tektro Alloy w/Reach Adjust

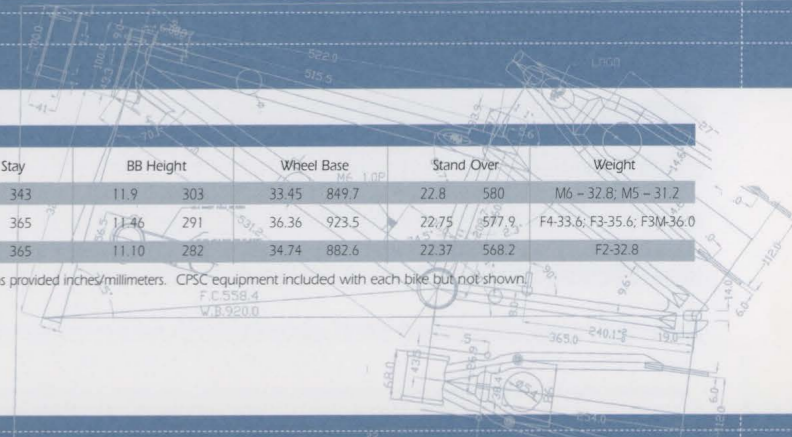
Nyquist Series Geometry									
Model	Head Angle	Seat Angle	Top Tube	Seat Tube (To Top)	Chain Stay	BB Height	Wheel Base	Stand Over	Weight
Nyquist Pro, R2	74.5	70	20.7 525.1	10.3 260.5	14.37 365.0	11.57 294	36.6 929.9	23.5 596.9	Pro - 30.2; R2 - 31.5
Nyquist R1	74.5	70	20.3 515.5	10.3 260.5	14.37 365.0	11.57 294	36.2 920	23.5 596.9	R1 - 31.6
Nyquist R24	73	70	21.7 550	12.0 305.0	15.9 406.0	12.28 312	39.2 996.2	25.6 650	R24 - 33.1
Freestyle Geometry									
Mirra Pro; Mirra 540	74.5	70	20.50 520.7	10.8 275	14.37 365	11.38 289	36.45 925.75	22.75 577.9	Pro/Freestyler -
Freestyler	74.5	70	20.50 520.7	10.8 275	14.37 365	11.38 289	36.45 925.75	22.75 577.9	33.4; 540 - 33.4
Mirra 360	72	70	16.39 416.2	8.31 211.1	11.93 303	9.65 245	30.49 774.4	18.90 480	360 - 25.4

Specifications subject to change without notice. *All dimensions center-to-center unless otherwise noted. Dimensions provided in Inches/millimeters. CPSC equipment included with each bike but not shown.

	F4	F3	F3M	F2	M6	M5
Frame Components						
Frame	New F-Series 3-Tube Crmo	New F-Series S/T Crmo	New F-Series S/T Crmo	New F-Series Jr. Sized Frame S/T Crmo	Master Full Crmo	Haro M-Series 3-Tube Crmo
Colors	SG Carolina Blue, Pewter, Clay, Satin	SG Blood Red, SG Army Green, Chrome	SG Blood Red, Chrome	X-Yellow, Chrome, Royal Blue	SG Royal Blue, SG Gray	SG Black, Pewter
Fork	Haro Straight Shooter Full Crmo	Haro Straight Shooter O/S	Haro Straight Shooter O/S	Haro Straight Shooter O/S	Haro Straight Shooter Full Crmo w/Integrated Preload Bolt	Haro Straight Shooter Full Crmo w/Integrated Preload Bolt
Head Set	TH Power Pro Aheadset 1 1/8"	TH Power Pro Aheadset 1 1/8"	TH Power Pro Aheadset 1 1/8"	TH Power Pro Aheadset 1 1/8"	TH Power Pro Aheadset 1 1/8"	TH Power Pro Aheadset 1 1/8"
Rotor	SST Oryg	SST Oryg	SST Oryg	SST Oryg	SST Oryg	SST Oryg
Drivetrain Components						
Crank Set	Haro Sub-C Tubular Crmo 3-Piece 175mm	HFC Forged Crmo 3-Piece 175mm	HFC Forged Crmo 3-Piece 175mm	Haro MegaCrank OPC 165mm	Haro Sub-C Tubular Crmo 3-Piece 165mm	Haro MegaCrank OPC Crmo 165mm
BB Set	Sealed Cartridge	Sealed Mech.	Sealed Mech.	Fusion Sealed Mech. OPC	Sealed Cartridge	Fusion Sealed Mech. OPC
Sprocket	Haro 39t	Haro 44t	Haro 44t	Haro 44t	Haro Alloy 28t	Haro 39t
Freewheel	ACS Fat 14 Crmo	ACS Main Drive 16t	ACS Main Drive 16t	ACS Main Drive 16t	12t Integrated Driver	ACS Fat 14 Crmo
Chain	KMC Z410	KMC Z410	KMC Z410	KMC Z410	KMC Z410	KMC Z410
Pedals	Fusion DX Alloy	Fusion DX Alloy	Fusion DX Alloy	Fusion DX Alloy	Fusion DX Alloy	Fusion DX Alloy
Control Center Components						
Handlebar	New 7.75 Street Bar 2.3	Haro Slim Bar 2.3	Haro Slim Bar 2.3	Haro X0 Jr. Sized Bar	Haro Slim Bar Full Crmo	Haro Slim Bar
Stem	Fusion Clamp-On	Fusion Clamp-On	Fusion Clamp-On	Fusion Clamp-On	New M Stem Forged	Fusion Clamp-On
Grip	Haro Core Grip	Haro Core Grip	Haro Core Grip	Haro Hevron Grip	Haro Core Grip	Haro Core Grip
Saddle	Haro Landing Strip	Haro Landing Strip	Haro Landing Strip	Haro Landing Strip	Haro Padded w/Edge Guards	Haro Padded w/Edge Guards
Seat Post	Haro Steel 25.4mm	Haro Steel 25.4mm	Haro Steel 25.4mm	Haro Steel 25.4mm	Alloy Micro Adjust 25.4mm	Alloy Micro Adjust 25.4mm
Seat Clamp	Haro SOHC	Haro SOHC	Haro SOHC	Haro SOHC	Haro SOHC	Haro SOHC
Wheelset Components						
Hubset	Haro Alloy w/ 14mm Hollow Crmo Axle	OS w/ 14mm Axle	ACS Stealth 3-Spoke Mags	OS w/ 14mm Axle	Haro FatHub / Turbine Freecoaster w/14mm Axle Hollow Front	Haro Alloy w/ 14mm Hollow Crmo Axle
Rim	Alex Y-22 48h	Alex 303 48h	N/A	Alex 303 48h	Sun Rhino Lite Chrome 48h	Alloy Chrome Plated 48h
Spokes	14g	14g	N/A	14g	14g Stainless	14g
Tire	Haro MS 4 2.0	Haro MS 4 2.0	Haro MS 4 2.0	Haro MS 4 2.0	Haro Rap 2.0	Haro Rap 2.0
Pegs / Misc	Steel Grooved Pegs	Steel Grooved Pegs	Steel Grooved Pegs	Steel Grooved Pegs	Ground Round Alloy Pegs	Ground Round Alloy Pegs
Brake Components						
Brake Set	Tektro Alloy U-Brake w/Sticky Pads F & R	Tektro Alloy U-Brake w/Sticky Pads F & R	Tektro Alloy U-Brake w/Sticky Pads F & R	Tektro Alloy U-Brake w/Sticky Pads F & R	Tektro Alloy U-Brake w/Sticky Pads F & R	Tektro Alloy U-Brake w/Sticky Pads F & R
Brake Lever	Tektro Alloy w/Reach Adjust	Tektro Alloy w/Reach Adjust	Tektro Alloy w/Reach Adjust	Tektro Alloy w/Reach Adjust	Tektro Alloy w/Reach Adjust	Tektro Alloy w/Reach Adjust

Freestyle Geometry									
Model	Head Angle	Seat Angle	Top Tube	Seat Tube (To Top)	Chain Stay	BB Height	Wheel Base	Stand Over	Weight
Master M6; M5	75	69	18.75 476.3	10.24 260	13.50 343	11.9 303	33.45 849.7	22.8 580	M6 - 32.8; M5 - 31.2
F4; F3/F3 Mag	74	70	20.25 514.4	10.8 275	14.37 365	11.46 291	36.36 923.5	22.75 577.9	F4-33.6; F3-35.6; F3M-36.0
F2	74	71	18.6 474	10.24 260	14.37 365	11.10 282	34.74 882.6	22.37 568.2	F2-32.8

Specifications subject to change without notice. *All dimensions center-to-center unless otherwise noted. Dimensions provided in inches/millimeters. CPSC equipment included with each bike but not shown.



	Group 1 SX Pro	Group 1 SX Comp XL	Group 1 SX Comp	Group 1 SX Cruiser	Group 1 SX Expert	Group 1 SX Junior	Group 1 SX Mini	Group 1 CSX Mini
Frame Components								
Frame	SX Pro XL Frame with Custom Hydro-formed Top Tube w/Euro BB	SX Pro XL Frame with Custom Hydro-formed Top Tube w/Euro BB	SX Comp Frame with Custom Hydro-formed Top Tube w/Euro BB	SX Cruiser Frame with Custom Hydro-formed Top Tube w/Euro BB	Group 1 Expert 7005 Alloy w/3-D Forged Dropout	Group 1 Junior 7005 Alloy w/3-D Forged Dropout	Group 1 Mini 7005 Alloy w/3-D Forged Dropout	Haro Group 1 Mini Full Crmo
Colors	Royal Blue/ Silver	Orange/ Silver	Absolut Red/ Silver	Royal Blue/ Silver	Royal Blue/ Silver	Royal Blue/ Silver	Royal Blue/ Silver	Absolut Red/ Silver, Black/ Silver
Fork	Haro Carbon Race w/Crmo Steerer Tube	Haro BMX Full Crmo	Haro BMX Full Crmo	Haro BMX Cruiser Full Crmo	Haro Crmo 1" Threadless	Haro Crmo 1" Threadless	Haro Crmo 1" Threadless	Haro Crmo 1" Threadless
Head Set	Sealed Cartridge Bearing Internal Cup Aheadset	TH Power Pro Internal Cup Aheadset	TH Power Pro Internal Cup Aheadset	TH Power Pro Internal Cup Aheadset	TH Power Pro 1" Aheadset	TH Power Pro 1" Aheadset	TH Power Pro 1" Aheadset	TH Power Pro 1" Aheadset
Rotor	N/A	N/A	N/A	N/A	N/A	N/A	N/A	N/A
Drivetrain Components								
Crank Set	Truvativ Racing XR Isis Spline	Haro Sub-C Tubular Crmo 180mm	Haro Sub-C Tubular Crmo 180mm	Haro Sub-C Tubular Crmo 180mm	Haro Forged Alloy 3-Piece 170mm	Haro Forged Alloy 3-Piece 165mm	Haro Forged Alloy 3-Piece 155mm	Haro Forged Alloy 3-Piece 155mm
BB Set	Truvativ Isis Spline	Threaded Euro w/4 Sealed Bearings	Threaded Euro w/4 Sealed Bearings	Threaded Euro w/4 Sealed Bearings	Cartridge Sealed Bearing w/Alloy Cups	Cartridge Sealed Bearing w/Alloy Cups	Cartridge Sealed Bearing w/Alloy Cups	Cartridge Sealed Bearing
Sprocket	Truvativ 44t Alloy	Alloy 44t	Haro Alloy 44t	Haro Alloy 40t	36t Alloy	36t Alloy	36t Alloy	42t Alloy
Freewheel	16t Cassette	ACS Claws 16t Crmo	ACS Claws 16t Crmo	ACS Claws 17t Crmo	ACS Claws 14t Crmo	ACS Claws 14t Crmo	ACS Claws 14t Crmo	ACS Main Drive 16t
Chain	KMC Z610H	KMC Z410	KMC Z410	KMC Z410	KMC Z610	KMC Z610	KMC Z610	KMC Z410
Pedals	Haro Big Block	Fusion Super DX Alloy Threaded Pins	Fusion Super DX Alloy Threaded Pins	Fusion Super DX Alloy Threaded Pins	Mini Alloy	Mini Alloy	Mini Alloy	Mini Alloy
Control Center Components								
Handlebar	Sledgehammer 2k Crmo	Sledgehammer 2k Crmo	Sledgehammer 2k Crmo	Sledgehammer 2k Cruiser Crmo	Haro Alloy Expert	Haro Alloy Junior	Haro Alloy Mini	Haro Alloy Mini
Stem	Haro Small Block SL	Haro Small Block SL	Haro Small Block SL	Haro Small Block SL	Fusion Mini Clamp-On	Fusion Mini Clamp-On	Fusion Mini Clamp-On	Fusion Mini Clamp-On
Grip	New Haro Tread Flanged	New Haro Tread Flanged	New Haro Tread Flanged	New Haro Tread Flanged	Haro Mini Logo w/Flange	Haro Mini Logo w/Flange	Haro Mini Logo w/Flange	Haro Mini Logo w/Flange
Saddle	SDG I-Beam	Haro Race Seat	Haro Race Seat	Haro Race Seat	Haro Unibody Padded	Haro Unibody Padded	Haro Unibody Padded	Haro Unibody Padded
Seat Post	SDG I-Beam 30.6mm	Haro Micro Adj. Alloy 30.6mm	Haro Micro Adj. Alloy 30.6mm	Haro Micro Adj. Alloy 30.6mm	Alloy w/Seat 22.2mm	Alloy w/Seat 22.2mm	Alloy w/Seat 22.2mm	Alloy w/Seat 22.2mm
Seat Clamp	Haro Race Lite	Haro Race Lite	Haro Race Lite	Haro Race Lite	Haro Race Lite	Haro Race Lite	Haro Race Lite	Haro Race Lite
Wheelset Components								
Hubset	Haro Race Cassette Sealed Bearing 36h	Alloy Rubber Sealed 36h	Alloy Rubber Sealed 36h	Haro Sealed Bearing 36h	Haro Sealed Bearing 32h Flip/Flop	Haro Sealed Bearing 28h/32h Flip/Flop	Haro Sealed Bearing 28h/32h Flip/Flop	Alloy Rubber Sealed 32h
Rim	Sun Rhino Lite w/Eyelets & CNC Sides	Sun Rhino Lite CNC Sides	Sun Rhino Lite CNC Sides	Sun Rhino Lite CNC Sides	Alex DA22 Double Wall Black w/CNC Sides	Alex DA22 Double Wall Black w/CNC Sides	Alex DA22 Double Wall Black w/CNC Sides	Alex VP15 20 x 1 3/8"
Spokes	14g Stainless	14g	14g	14g	14g Stainless	15g Stainless	15g Stainless	15g
Tire	Haro Catapult 2.1/ 1.85	Haro Catapult 2.1/ 1.85	Haro Catapult 2.1/ 1.85	Kenda K-Rad 24 x 1.95	Kenda Krankit 20 x 1 3/8"	Kenda Krankit 20 x 1 3/8"	Kenda Krankit 20 x 1 1/8"	Kenda Krankit 20 x 1 1/8"
Pegs / Misc	N/A	N/A	N/A	N/A	N/A	N/A	N/A	N/A
Brake Components								
Brake Set	Shimano V-Brake w/Cartridge Pads	Tektro Alloy Direct Pull	Tektro Alloy Direct Pull	Tektro Alloy Direct Pull	Tektro Mini Direct Pull	Tektro Mini Direct Pull	Tektro Mini Direct Pull	Tektro Mini Direct Pull
Brake Lever	Shimano Deore	Alloy w/Reach Adjust	Tektro Alloy w/Reach Adjust	Tektro Alloy w/Reach Adjust	Tektro Alloy w/Reach Adjust	Tektro Alloy w/Reach Adjust	Tektro Alloy w/Reach Adjust	Tektro Alloy w/Reach Adjust

Group 1																
Model	Head Angle	Seat Angle	Top Tube		Seat Tube (To Top)		Chain Stay		BB Height		Wheel Base		Stand Over		Weight	
Group 1 SX Pro XL/Comp XL	74.5	72	21.26	540	12.01	305	14.7	374	11.77	299	37.25	962.3	23.25	590.6	SX Pro XL-25.2	
															SX Comp XL-26.1	
Group 1 SX Comp	74.5	72	20.5	520.5	12.01	305	14.25	362	11.77	299	37.88	946.2	23.25	590.6	SX Comp – 26.1	
Group 1 SX 24	73.5	71	21.85	555	12.99	330	15.67	398	11.69	297	39.74	1,009.40	25.50	647.7	SX 24-26.9	
Group 1 SX Expert	73	71	18.90	480	10.24	260	13.54	344	10.94	278	35.10	891.6	21.25	539.75	SX Expert-17.3	
Group 1 SX Junior	73	71	18.31	465	10.24	260	13.54	344	10.94	278	34.90	886.4	21.25	539.75	SX Junior-17.1	
Group 1 SX Mini	72	71	17.52	445	9.45	240	13.03	331	10.94	278	33.45	849.6	21.25	539.75	SX Mini-16.2	
Group 1 CSX Mini	72	72	17.13	435	9.45	240	13.15	334	10.94	278	33.11	841	21.00	533.4	CSX Mini-18.0	

Specifications subject to change without notice. *All dimensions center-to-center unless otherwise noted. Dimensions provided inches/millimeters. CPSC equipment included with each bike but not shown.

	Backtrail X24	Backtrail X2	Backtrail X1	Backtrail X0	Backtrail Z20	Backtrail Z16	Backtrail Z12
Frame Components							
Frame	04 Backtrail 3 Tubes Crmo	04 Backtrail 3 Tubes Crmo	04 Backtrail 1 Tube Crmo	04 Backtrail 1 Tube Crmo	New Z20" Lo-Profile 1 Tube Crmo w/ 3-Pc Padset	New Z16" Lo-Profile w/ 3-Pc Padset	New Z12" Lo-Profile w/ 3-Pc Padset
Colors	SG Black	Satin, SG Black, Absolut Red, SG Putty	Chrome, Black, X-Yellow, SG Royal Blue	Chrome, Candy Blue, Black	Chrome, Candy Blue, Absolut Red	Royal Blue, Chrome	Absolut Red, Candy Blue
Fork	Haro BMX Full Crmo	Haro BMX Crmo Steerer	Haro BMX OS Threadless	Haro BMX OS Threadless	Haro BMX OS Threadless	16" Steel	12" Steel
Head Set	TH Power Pro 1 1/8" Aheadset	TH Power Pro 1 1/8" Aheadset	TH Power Pro 1 1/8" Aheadset	TH Power Pro 1 1/8" Aheadset	TH Power Pro 1 1/8" Aheadset	BMX Treaded	BMX Treaded
Rotor	SST Oryg	SST Oryg	SST Oryg	N/A	N/A	N/A	N/A
Drivetrain Components							
Crank Set	Haro Sub-C Tubular Crmo 3-Pc 175mm	Haro Sub-C Tubular Crmo 3-Pc 175mm	Haro MegaCrank 175mm Crmo	Haro MegaCrank 175mm Crmo	Haro 140mm	Haro 4 1/2"	Haro 3 1/2"
BB Set	Sealed Bearing	Sealed Bearing	Fusion Sealed Mech. OPC	Fusion Sealed Mech. OPC	Fusion Sealed Mech. OPC	Fusion Sealed Mech. OPC	Fusion Sealed Mech. OPC
Sprocket	Haro 39t	Haro 44t	Haro 44t	Haro 44t	Haro 40t	Haro Steel 36t	Haro Steel 28t
Freewheel	ACS Main Drive 17t	ACS Main Drive 16t	ACS Main Drive 16t	ACS Main Drive 16t	16t	16t	16t
Chain	KMC Z410	KMC Z410	KMC Z410	KMC 410	KMC 410	KMC 410	KMC 410
Pedals	Fusion DX Alloy	Fusion DX Alloy	Fusion DX Alloy	Small Block Resin	Small Block Resin	Resin	Resin
Control Center Components							
Handlebar	Sledgehammer 2k Cruiser	Haro Slim Bar 2.3	Haro Slim Bar 2.3	Haro Slim Bar 2.3	Haro 20" Jr.	Haro 16" Mini	Haro 12" Mini
Stem	Fusion Clamp-On	Fusion Clamp-On	Fusion Clamp-On	Fusion Clamp-On	Fusion Clamp-On	Fusion Alloy	Fusion Alloy
Grip	Haro Stripe w/Flange	Haro Stripe w/Flange	Haro Stripe w/Flange	Haro Stripe w/Flange	Haro Stripe w/Flange	Haro Kraton w/Flange	Haro Kraton w/Flange
Saddle	Haro Padded	Haro Padded	Haro Padded	Haro Padded	Haro Padded	Haro Padded	Haro Padded
Seat Post	Haro Straight 25.4	Haro Straight 25.4	Haro Straight 25.4	Haro Straight 25.4	Haro Straight 25.4	Haro Straight 22.2	Haro Straight 22.2
Seat Clamp	Haro SOHC	Haro SOHC	Haro SOHC	Haro SOHC	Haro SOHC	Integrated Bolt	Integrated Bolt
Wheelset Components							
Hubset	Haro Mid Flange 36h 3/8" axle	Alloy 48h 14mm axle	Alloy 48h 14mm axle	Alloy 36h 3/8" axle	Steel / Coaster Brake 36h	Steel / Coaster Brake 28h	Steel / Coaster Brake 16h
Rim	Alex 303 24" Black Anodized	Alex 303 Black Anodized	Alex 303 Black Anodized	Alloy Black Anodized	Alloy Black Anodized	Alloy Black Anodized	Alloy Black Anodized
Spokes	14g	14g	14g	14g	14g	14g	14g
Tire	Kenda K-Rad 24 x 1.95	Haro Catapult 2.25/2.1	Haro Catapult 2.25/2.1	Haro Catapult 2.25/2.1	Haro Catapult 2.25/2.1	Kenda K-50 2.125"	Kenda K-50 2.125"
Axle Pegs / Misc	N/A	N/A	N/A	N/A	N/A	Sturdy Training Wheels	Sturdy Training Wheels
Brake Components							
Brake Set	Tektro U-Brake Rear Only	Tektro U-Brake Rear Only	Tektro U-Brake Rear Only	Tektro U-Brake Rear Only	Tektro U-Brake Rear Only	Tektro Alloy Caliper / Coaster	Coaster Brake
Brake Lever	Tektro Alloy Reach Adjust	Tektro Alloy Reach Adjust	Tektro Alloy Reach Adjust	Tektro Alloy Reach Adjust	Tektro Alloy Reach Adjust	Tektro Alloy Reach Adjust	N/A

Backtrail Series															
Model	Head Angle	Seat Angle	Top Tube		Seat Tube (To Top)		Chain Stay		BB Height		Wheel Base		Stand Over		Weight
Backtrail X24	73	71	21.85	555.0	12.0	305	15.75	400	12.4	315	39.2	996.2	26.2	655	X24-29.7
Backtrail X2, X1	74	70	20.24	514	10.24	260	14.37	365	11.5	293	36.22	920.0	22.8	580	X2-30.5; X1-30.8
Backtrail X0	74	70	19.8	503	10.24	260	14.37	365	11.5	293	35.7	907.0	22.8	580	X0-28.2
Backtrail Z20	73.5	71	19.1	485.8	10.24	260	14.37	365	9.6	244	34.7	882.1	21.5	546	Z20-27.1
Backtrail Z16	72	70	15.18	385.7	8.37	212.5	11.50	292	9.30	236.2	28.54	725	18.7	475	X16-22.0
Backtrail Z12	70	68.5	11.95	303.6	6.89	175	9.56	243	7.1	181.0	23.18	588.8	14.96	380	X12-17.6

Specifications subject to change without notice. *All dimensions center-to-center unless otherwise noted. Dimensions provided in inches/millimeters. CPSC equipment included with each bike but not shown.



HARO BIKES
1230 Avenida Chelsea
Vista, CA 92081
www.harobikes.com

Antigua: Courts Barbados, **Argentina:** Argold S.A., **Aruba:** Radio, Shack Aruba, **Australia:** Malvern Star, **Barbados:** Courts Barbados, **Belgium:** Louis Verwimp, **Belize:** Courts Barbados, **Bolivia:** Visal Import Export, **Brunei:** Cappa Trading Ptd. Ltd., **Canada:** Norco, **Chile:** Bike's Store Ltda., **Colombia:** JD Ossa & CIA, **Costa Rica:** Distribuidora 86, **Czech Republic:** M&R s.r.o., **Denmark:** Sport Bike, **Dominica:** Courts Barbados, **Ecuador:** Marcelo Solis, **El Salvador:** La Cadena Del Ciclista, **England:** Moore Large & Co. Ltd., **Finland:** Hyper Bike, **France:** Velo 2000, **Germany:** WTP Distribution, **Greece:** Nikos Maniatopoulos, **Grenada:** Courts Barbados, **Guatemala:** La Cadena Del Ciclista, **Guyana:** Courts Barbados, **Honduras:** La Cadena Del Ciclista, **Hong Kong:** Cappa Trading, **Hungary:** Avex Ltd., **Israel:** Matman-Merutz, **Italy:** Velo 2000, **Jamaica:** Courts Barbados, **Japan:** Motocross International, **Korea:** Highland Sports Ltd., **Luxembourg:** Louis Verwimp, **Malaysia:** Cappa Trading, **Mexico:** Xtreme Bike, **Netherlands:** Louis Verwimp, **New Caledonia:** Cycal Sarl, **New Zealand:** Repco Sport, **Nicaragua:** La Cadena Del Ciclista, **Norway:** Norbike Engros, **Portugal:** Ciclo Coimbroes, **Puerto Rico:** Ciclismo, **Republic of Panama:** JD Ossa & CIA, **Russia:** Sportclub Triathlon, **Singapore:** Cappa Trading, **South Africa:** Probike, **Spain:** Velo 2000, **St. Kitts, St. Lucia, St. Vincent:** Courts Barbados, **Sweden:** Norbike Engros, **Switzerland:** WTP Distribution, **Taiwan:** Kenstone Metal, **Thailand:** Asia International, **Trinidad:** Courts Barbados, **Uruguay:** Argold S.A., **Venezuela:** Redemo Bikes C.A.

Official Team Co-Sponsors:



SHIMANO